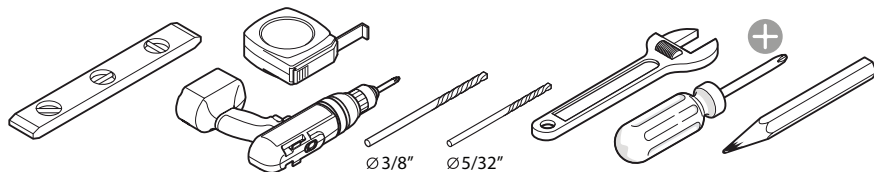


FMC8011(BE) / 8091(BE)

FRESCA 36" TALL BATHROOM MEDICINE CABINET INSTALLATION GUIDE



TOOLS REQUIRED FOR INSTALLATION:



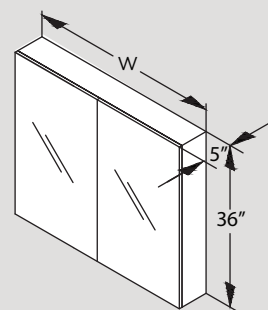
INCLUDED IN THE PACKAGE:

- | | |
|----------------------|----------------------------|
| A. Medicine Cabinet | G. Screw #8x2".....(X8) |
| B. Side Bracket (X4) | H. Top Mounting Bracket |
| C. Side Mirror..(X2) | I. Bottom Mounting Bracket |
| D. Small Screw (X4) | J. Snap-in Shelf Pin (X16) |
| E. Glass Shelf..(X4) | K. Hole Plug.....(X40) |
| F. Anchor.....(X8) | |

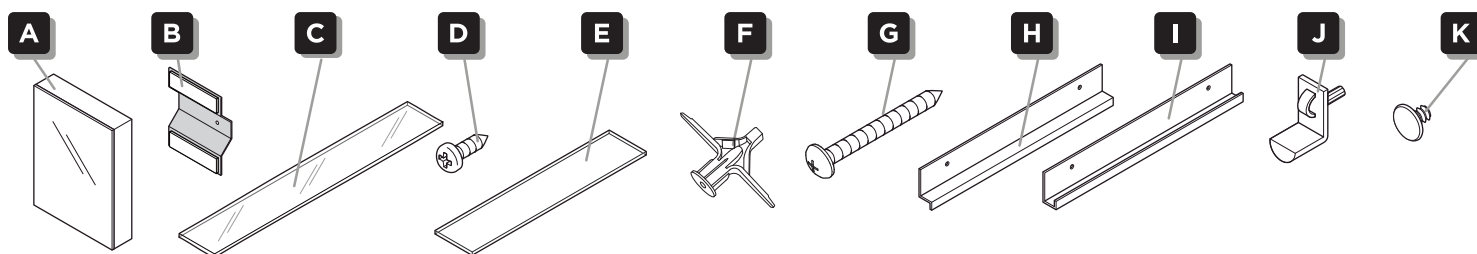
DIMENSIONS

FMC 8011(BE)
W = 39-1/2"

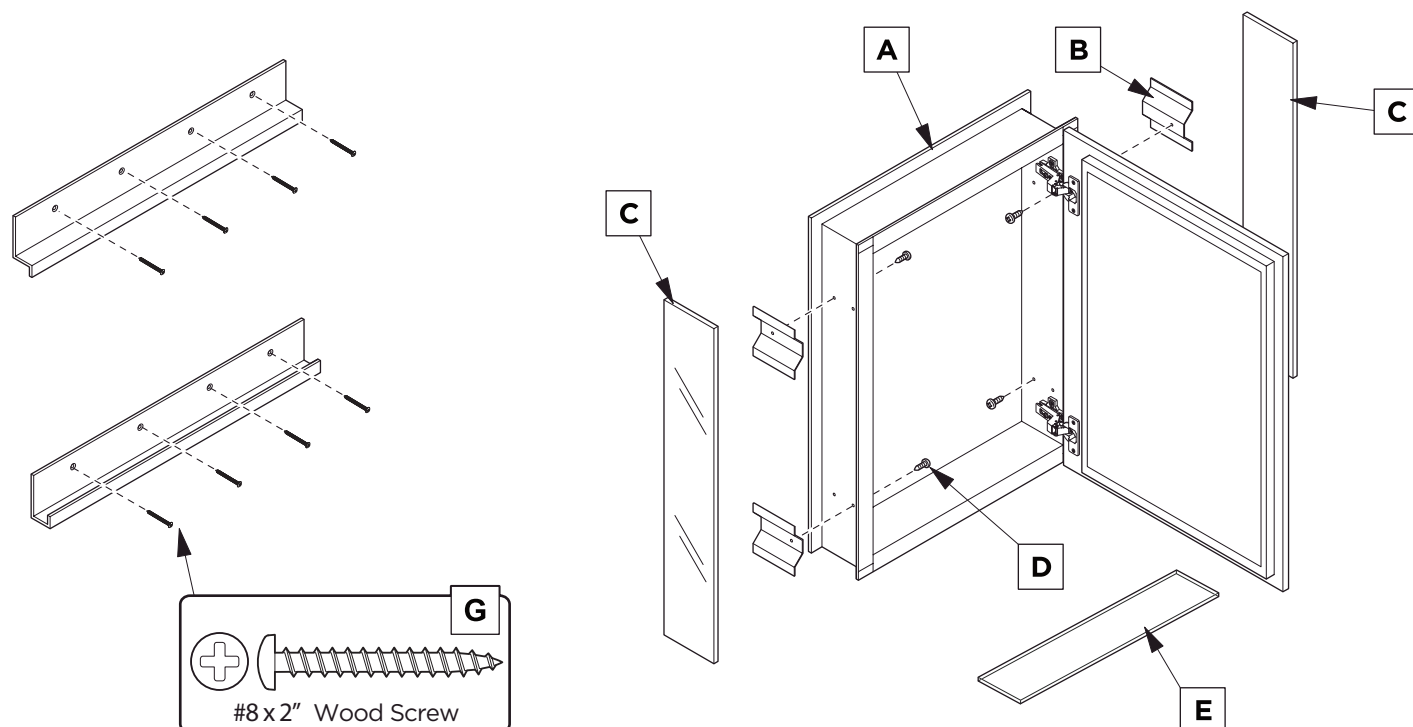
FMC 8091(BE)
W = 29-1/2"



⚠ All dimensions & specifications are approximate and subject to change without notice.



INCLUDED IN THE PACKAGE:



ALL DIMENSIONS & SPECIFICATIONS ARE APPROXIMATE AND SUBJECT TO CHANGE WITHOUT NOTICE.



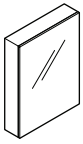
TOP AND BOTTOM MOUNTING BRACKETS MUST ASSEMBLE TO AT LEAST 1 WALL STUD FOR SECURE WALL ATTACHMENT.



FMC8011 (BE) / 8091(BE)

INSTALLATION GUIDE

PAGE 1



FMC8011(BE) / 8091(BE)

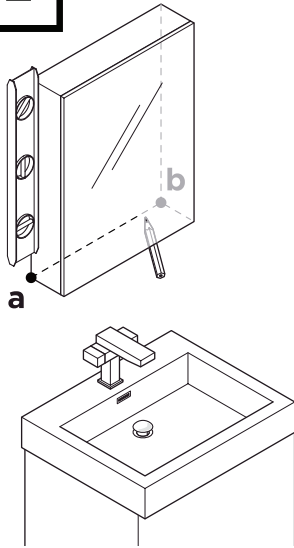
MEDICINE CABINET

INSTALLATION GUIDE



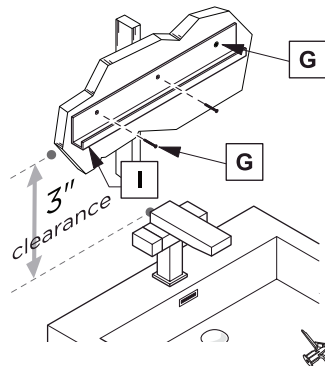
SURFACE-MOUNT INSTALLATION

1



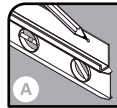
Level and mark the medicine cabinet's location on the wall from point **a** to point **b**.

2

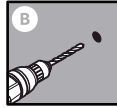


IMPORTANT:

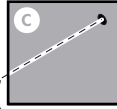
Consult an expert for the proper screws/bolts to use when attaching to various constructions. Screws provided **do not** attach to all wall construction types. Anchors are not required for screws installed in studs.



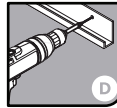
Level and mark.



Drill the holes in the wall with a 3/8" drill bit.



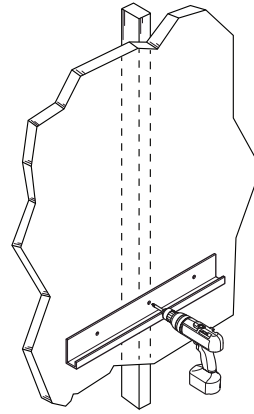
Insert the anchors in the holes.



Screws bottom bracket to the wall.



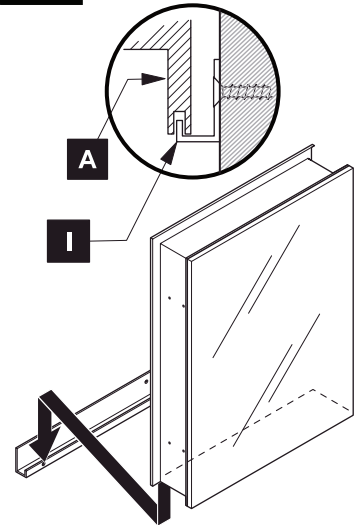
TOP AND BOTTOM MOUNTING BRACKETS MUST ASSEMBLE TO AT LEAST 2 WALL STUD FOR SECURE WALL ATTACHMENT.



IMPORTANT:

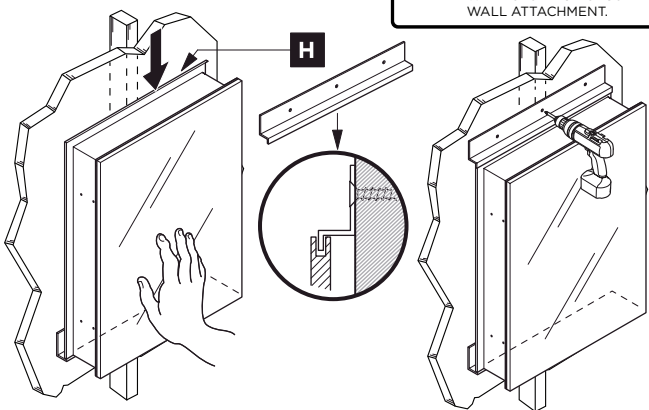
Using a stud finder mark the stud center on the bracket. Drill hole in bracket using 5/32" drill bit. Secure bracket to wall with screw **G**.

3



With assistance, rest the medicine cabinet on the bottom mounting bracket and hold it in place.

4



Hold the medicine cabinet (**A**) while it's placed on the bottom bracket, then secure by fitting the top bracket (**H**) on top of the medicine cabinet, and attach the top bracket (**H**) to the wall.

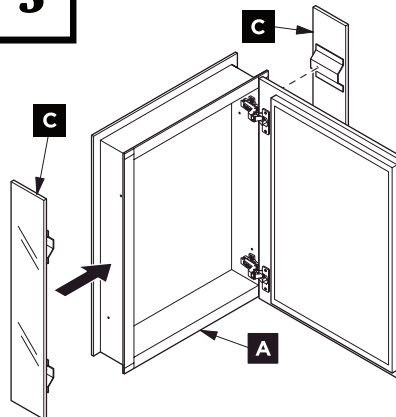


TOP AND BOTTOM MOUNTING BRACKETS MUST ASSEMBLE TO AT LEAST 2 WALL STUD FOR SECURE WALL ATTACHMENT.

IMPORTANT:

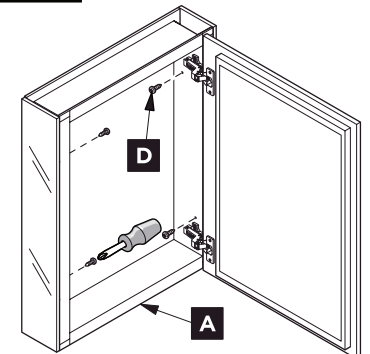
Using a stud finder mark the stud center on the bracket. Drill hole in bracket using 5/32" drill bit. Secure bracket to wall with screw **G**.

5



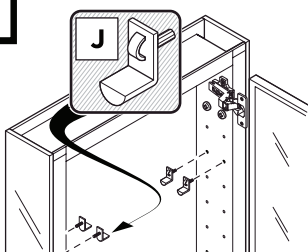
Align mirrored side panels (**C**) to each side of the medicine cabinet.

6



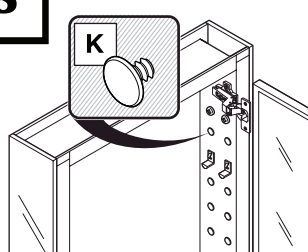
Attach mirrored side panels to the medicine cabinet using a screwdriver and provided screws (**D**).

7



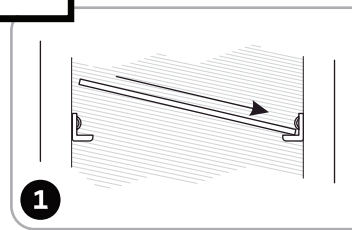
Push and twist the snap-in pins (**J**) into place.

8

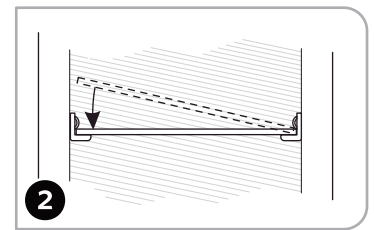


Fill remaining holes with the plugs (**K**).

9



Push a side of the shelf (**E**) into left or right pins (**J**).



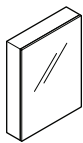
Snap the shelf (**E**) down into the opposite side.



FMC8011 (BE) / 8091(BE)

INSTALLATION GUIDE

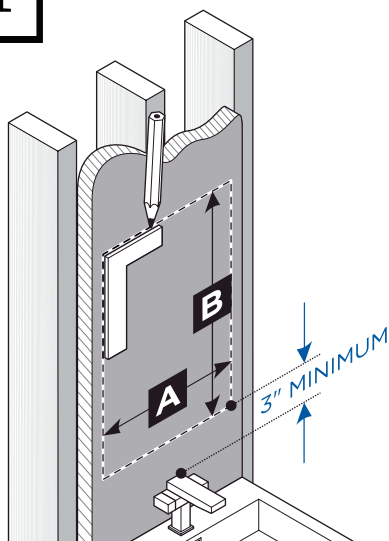
PAGE 2



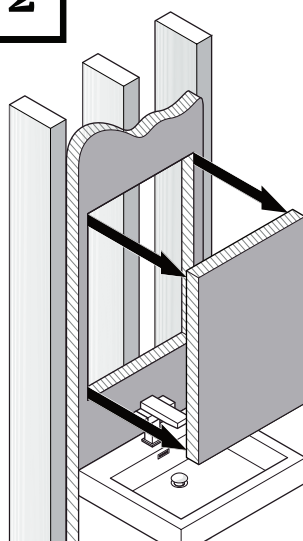
FMC8011(BE) / 8091(BE) MEDICINE CABINET INSTALLATION GUIDE



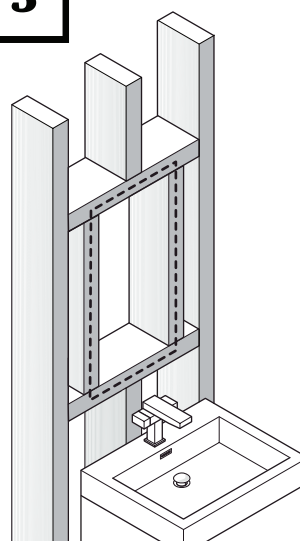
RECESS-MOUNT INSTALLATION

1

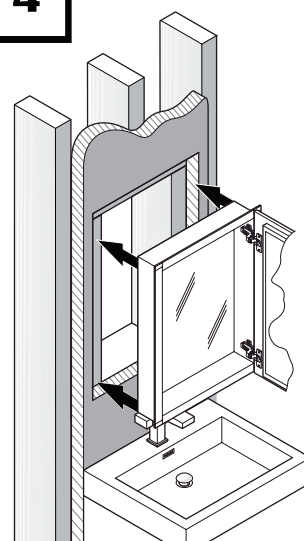
Draw the perimeter of the medicine cabinet on the wall.

2

Cut the marked perimeter with appropriate tool.

3

Frame the cutout opening.

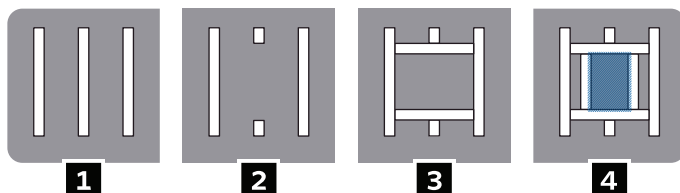
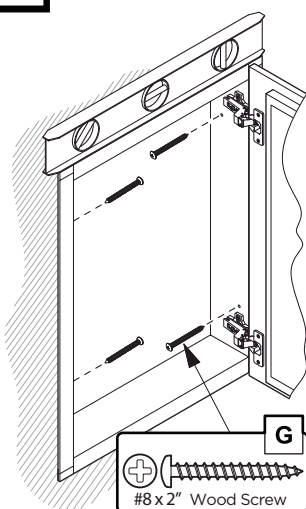
4

Place and hold the medicine cabinet in the cutout opening.

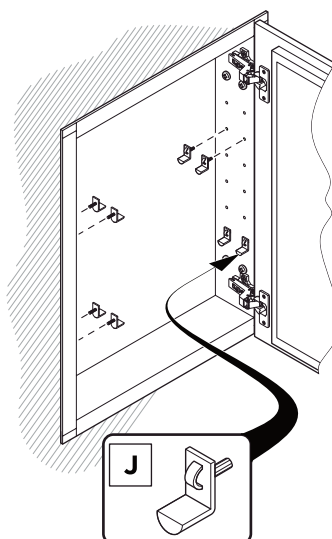
ROUGH IN DIMENSIONS

Model SKU	Width A	Height B	Depth
FMC8011(BE)	W 38-3/4"	H 35-1/4"	4"
FMC8091(BE)	W 28-7/8"	H 35-1/4"	4"

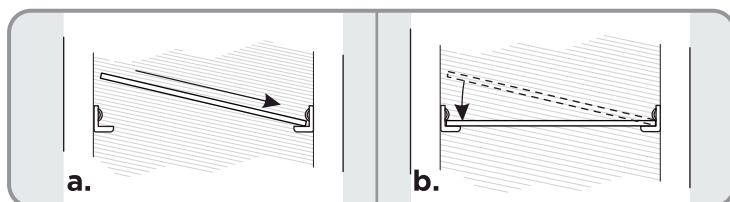
4 STEPS TO FRAME THE CUTOUT OPENING

**5**

Level, then secure the medicine cabinet with the screws (G) through the mounting holes into the framing studs.

6

Choose the position for your shelves then push and twist the snap-in pins (J) into place.

7

a. Push a side of the glass shelf (C) into left or right pins (J).

b. Snap the glass shelf (C) into the opposite side.

c. Fill remaining holes with the plugs (K).

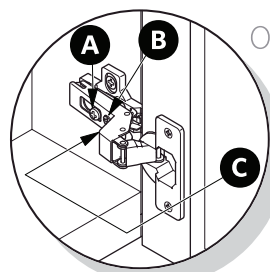


Illustration A.

OPTIONAL DOOR ADJUSTMENT:

- A** This screw allow you to adjust pitch side to side.
- B** This screw releases cabinet's door and allows up and down adjustment.
- C** This screw allow you to adjust the gap between doors.

**FMC8011 (BE) / 8091(BE)****INSTALLATION GUIDE**

PAGE 3