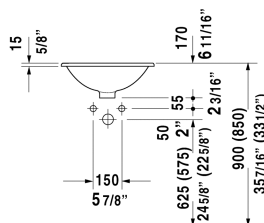
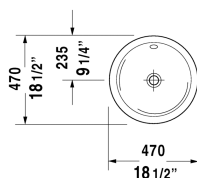


Architec Vanity basin # 0468470000

| < Ø 18 1/2" Inch > |



Vanity basin	Dimension	Weight	Order number
drop-in basin, with overflow, without tap platform, outside fully glazed, hardware included, Ø 18 1/2" Inch			
Colors			
00 White			
Variant			
☒	Ø 18 1/2" Inch	16.1 lb	0468470000
Sanitary ceramics with the special WonderGliss surface finish will remain clean and attractive-looking for a long time to come. When ordering WonderGliss please add a "1" as eleventh digit to the model number.			
Push-open waste	2" Inch	0.8 lb	005052
Suitable products			
Vanity unit wall-mounted 1 pull-out compartment, countertop including one cut-out, for 1 vanity basin central including cut-out for siphon and siphon cover, 31 1/2" x 21 5/8" Inch	31 1/2" x 21 5/8" Inch		KT6794
Vanity unit wall-mounted 1 pull-out compartment, countertop including one cut-out, for 1 vanity basin central including cut-out for siphon and siphon cover, 39 3/8" x 21 5/8" Inch	39 3/8" x 21 5/8" Inch		KT6795
Vanity unit wall-mounted 1 pull-out compartment, countertop including one cut-out, for 1 vanity basin central including cut-out for siphon and siphon cover, 47 1/4" x 21 5/8" Inch	47 1/4" x 21 5/8" Inch		KT6796
Vanity unit wall-mounted 2 pull-out compartments, 1 countertop with one cut-out or two cut-outs, for 1 or 2 vanity basins each including cut-out for siphon and siphon cover, 55 1/8" x 21 5/8" Inch	55 1/8" x 21 5/8" Inch		KT6797 B/L/R
Vanity unit for console 1 pull-out compartment, compartment consists of glass dividers and 2 boxes (small/large), 23 5/8" x 21 1/2" Inch	23 5/8" x 21 1/2" Inch		XL6719
Vanity unit for console 1 pull-out compartment, compartment consists of glass dividers and 2 boxes (small/large), 31 1/2" x 21 1/2" x 21 1/2" Inch	31 1/2" x 21 1/2" x 21 1/2" Inch		XL6713

Architec Vanity basin # 0468470000

|< Ø 18 1/2" Inch >|

Vanity unit for console 1 pull-out compartment, compartment consists of glass dividers and 2 boxes (small/large), 39 3/8" x 21 1/2" Inch

XL6715

All drawings contain the necessary measurements which are subject to standard tolerances. They are stated in inch & mm and are non-binding. Exact measurements, in particular for customized installation scenarios, can only be taken from the finished ceramic piece.