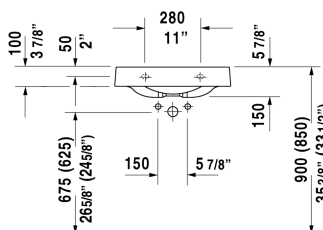
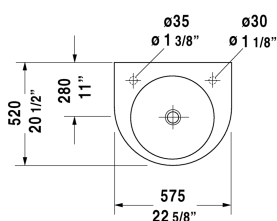


Architec Washbasin # 0449580000 / 0449580008 / 0449580009 / 0449580023

| < 22 5/8" Inch > |



| Washbasin | Dimension | Weight | Order number |
|--|------------------------|---------|--------------|
| without overflow, with tap platform, hardware included, wall-mounted, cUPC listed, 22 5/8" Inch | | | |
| | | | |
| Colors | | | |
| 00 White | | | |
| | | | |
| Variant | | | |
| ● ● with pre-punched tap hole for tap on left side, with pre-punched hole for soap dispenser on right side | 22 5/8" x 20 1/2" Inch | 33.5 lb | 0449580000 |
| ● tap hole on right side | 22 5/8" x 20 1/2" Inch | 33.5 lb | 0449580008 |
| ● tap hole on left side | 22 5/8" x 20 1/2" Inch | 33.5 lb | 0449580009 |
| ● ● tap hole on left side, soap dispenser right | 22 5/8" x 20 1/2" Inch | 33.5 lb | 0449580023 |
| | | | |
| Sanitary ceramics with the special WonderGliss surface finish will remain clean and attractive-looking for a long time to come. When ordering WonderGliss please add a "1" as eleventh digit to the model number. | | | |
| | | | |
| Slotted waste for washbasins without overflow | 2" Inch | 0.7 lb | 005024 |
| | | | |

All drawings contain the necessary measurements which are subject to standard tolerances. They are stated in inch & mm and are non-binding. Exact measurements, in particular for customized installation scenarios, can only be taken from the finished ceramic piece.