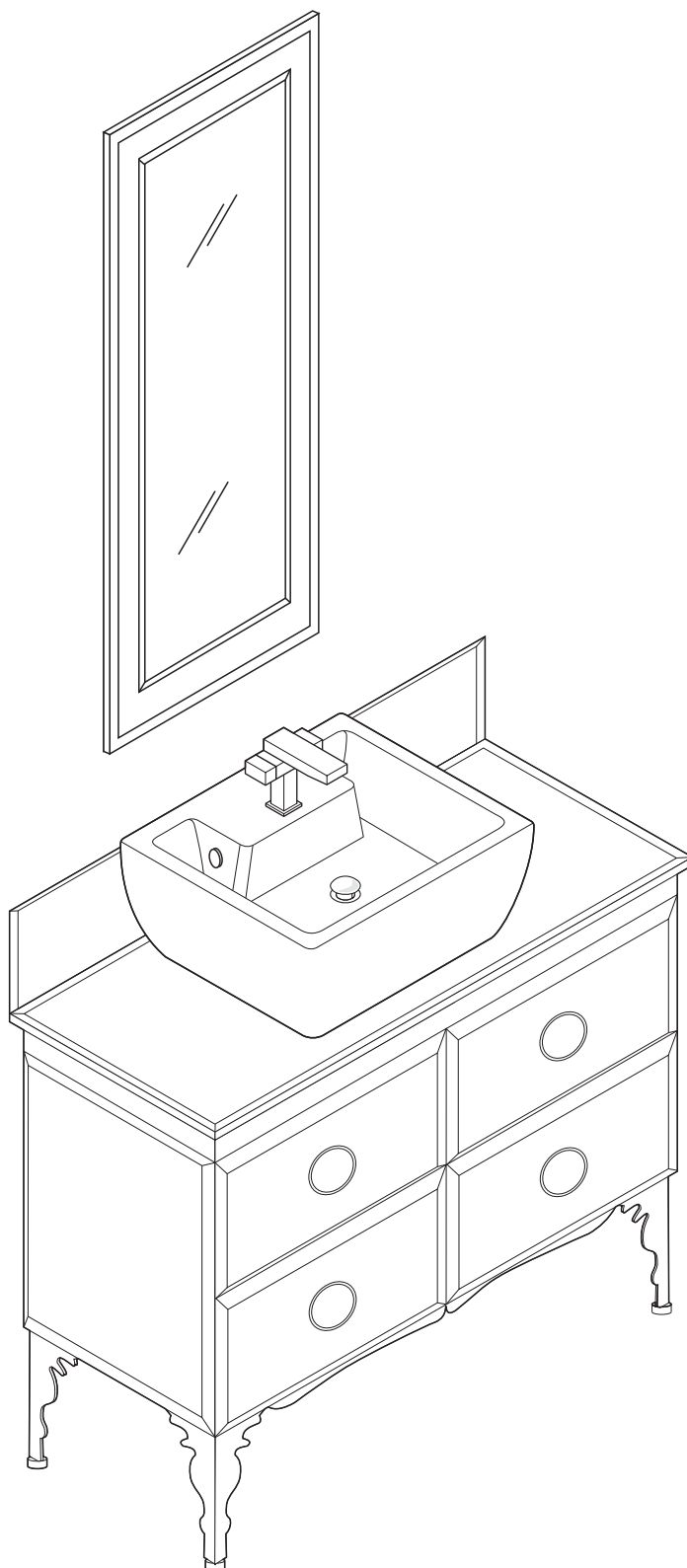
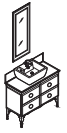


FVN7714 MOSELLE INSTALLATION GUIDE



FRESCA®

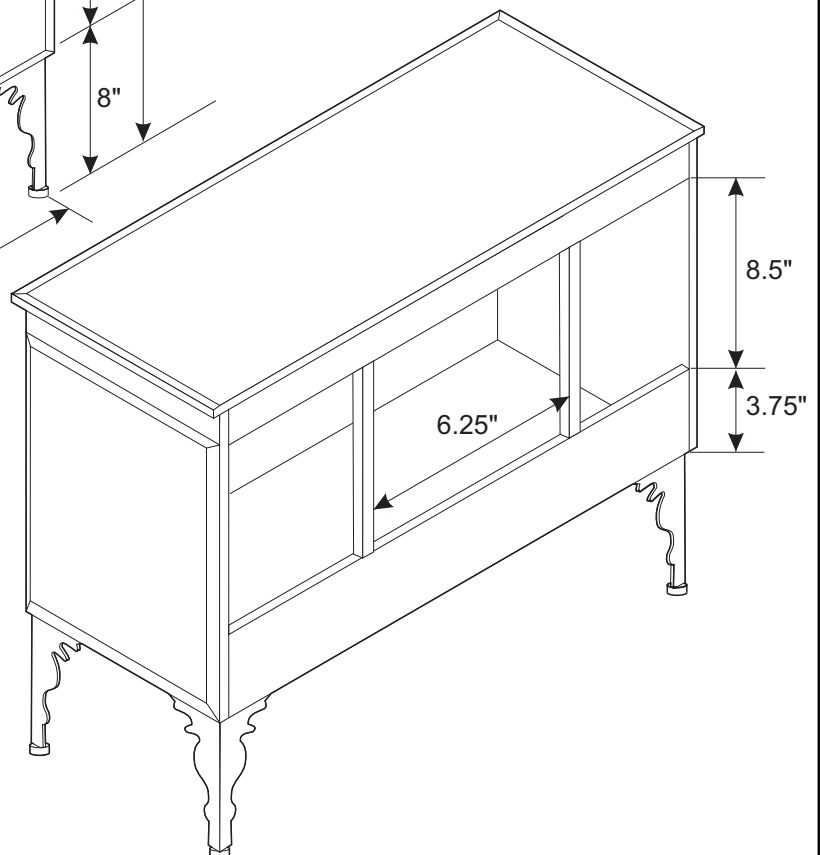
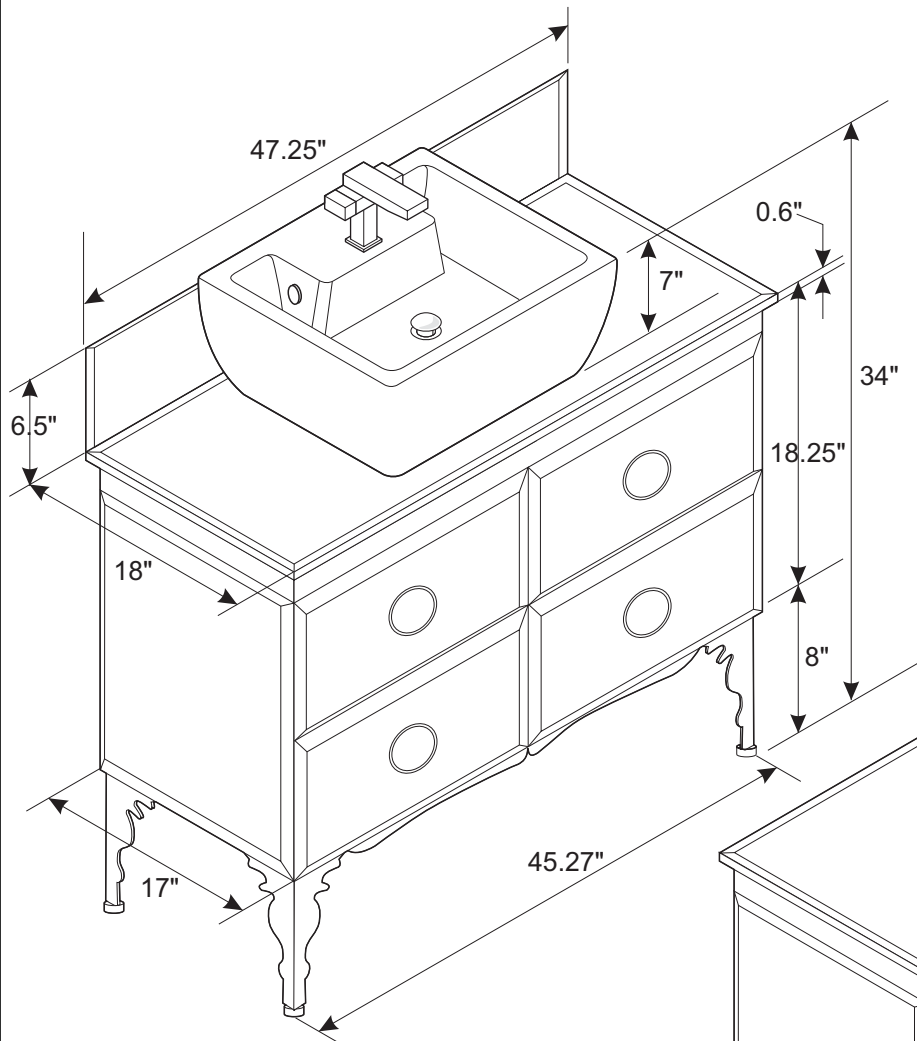
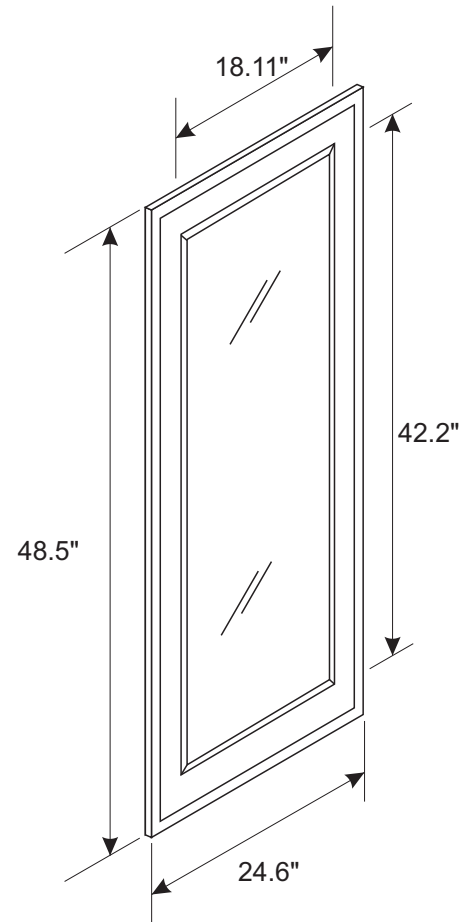
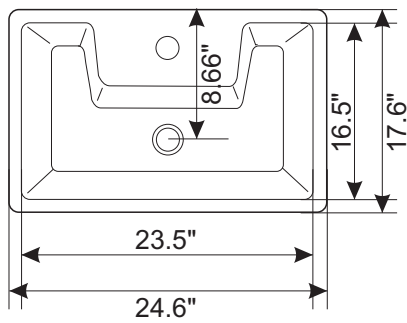




FVN7714 MOSELLE INSTALLATION GUIDE

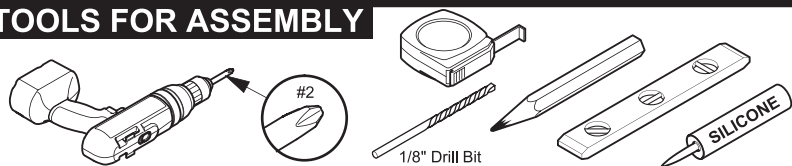


FRESCA®

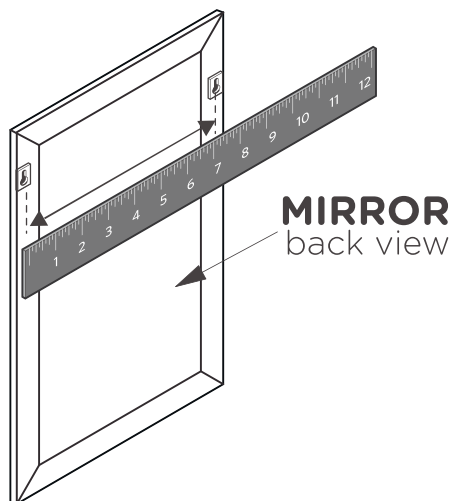


MIRROR INSTALLATION INSTRUCTION

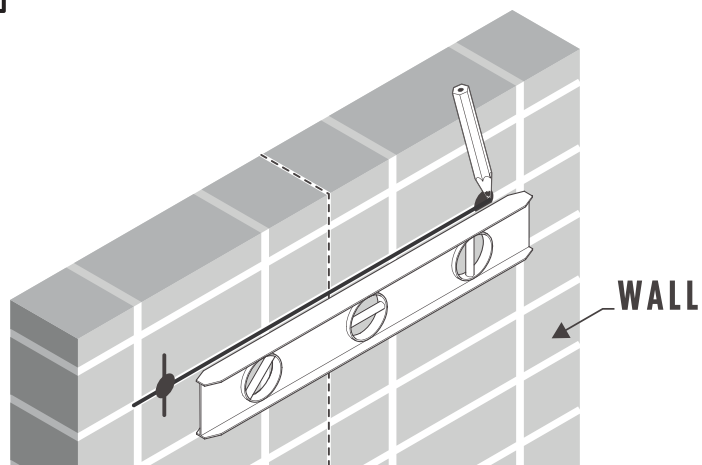
TOOLS FOR ASSEMBLY



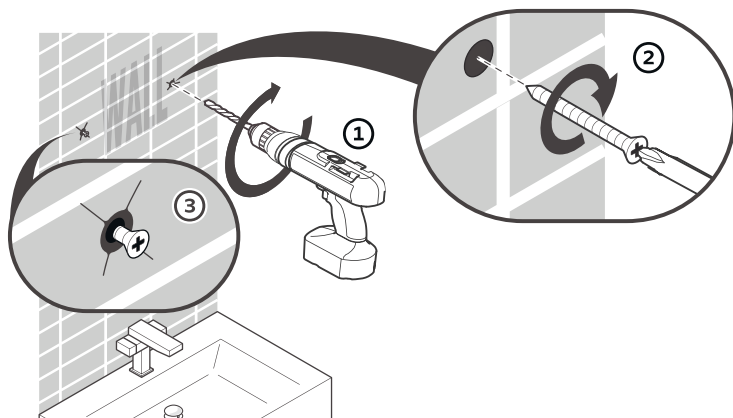
- 1 Measure the distance between the brackets on the back of the mirror



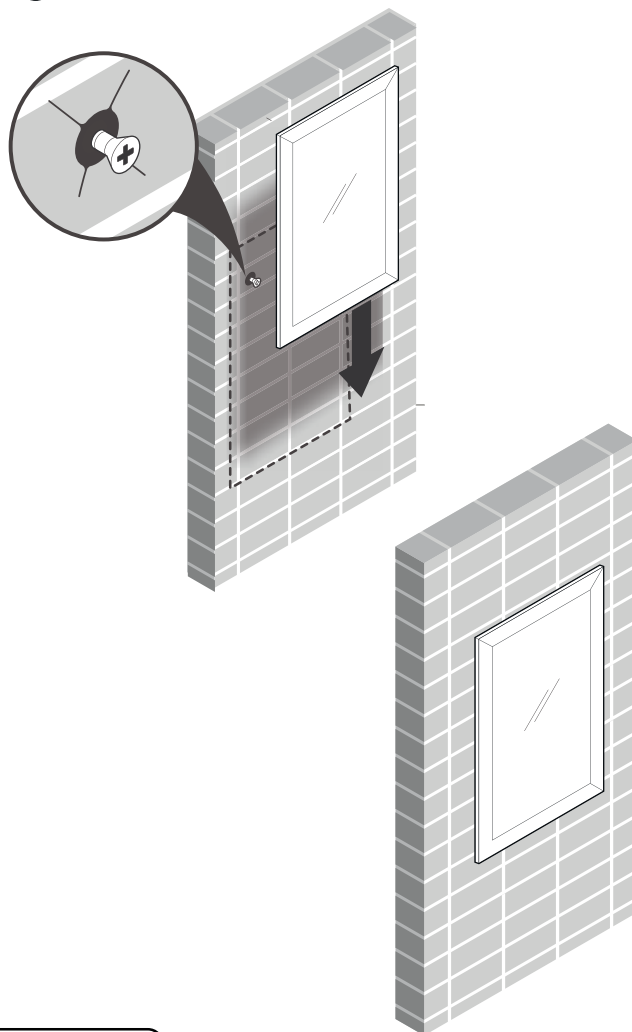
- 2 Mark the measured distance on the wall using a level



- 3 Once position is marked, drill 2 holes and insert anchors if stud is not available



- 4 Hang mirror on the wall



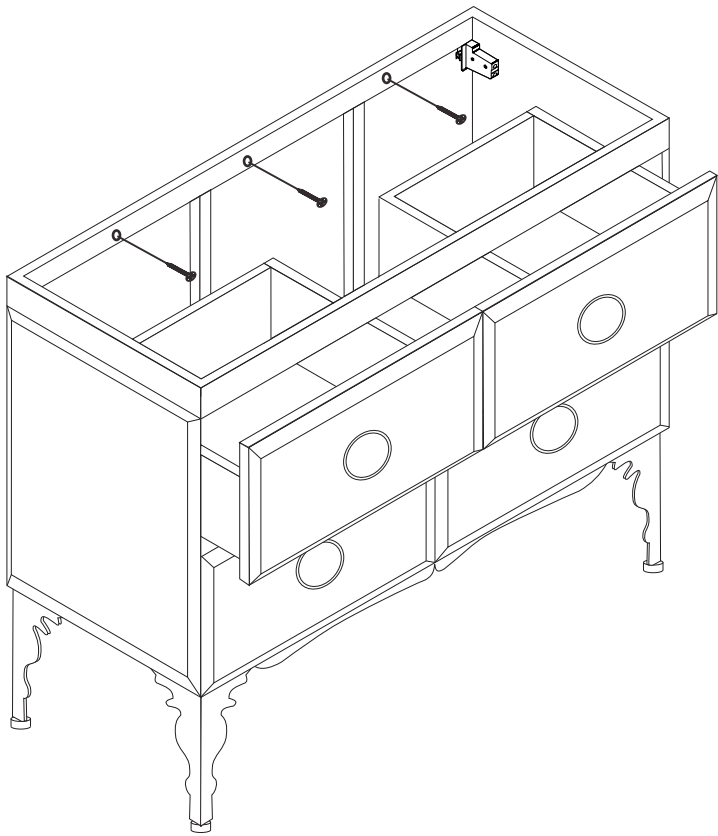
IMPORTANT:

CONSULT AN EXPERT FOR THE PROPER SCREWS/BOLTS TO USE WHEN ATTACHING TO VARIOUS WALL CONSTRUCTIONS. SCREWS PROVIDED **DO NOT ATTACH** TO ALL WALL CONSTRUCTION TYPES.

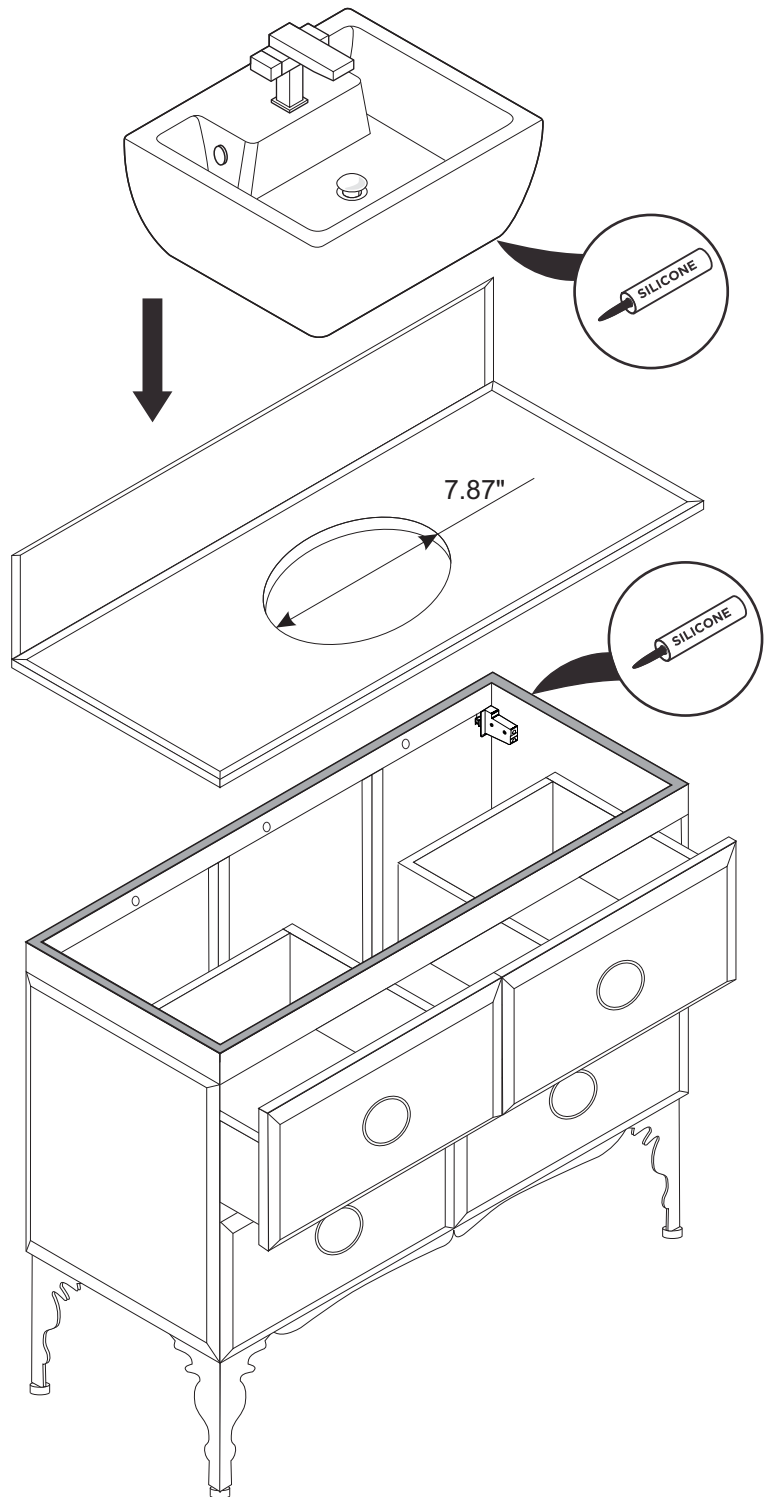
INSTALLATION GUIDE

1 Secure cabinet to the wall.

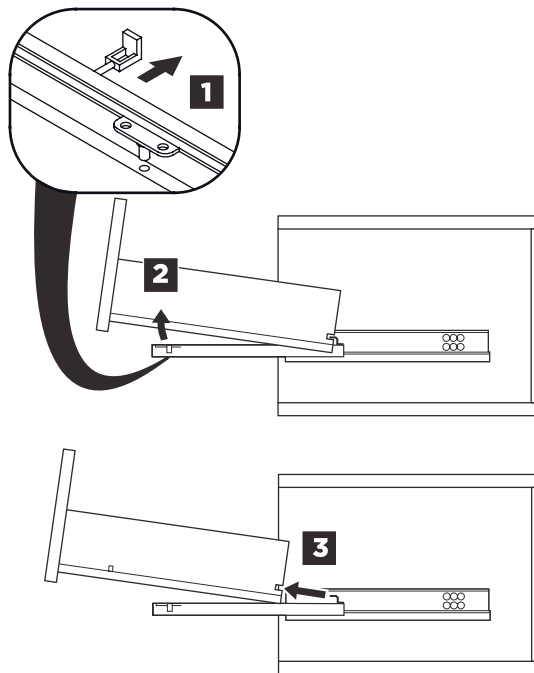
IMPORTANT: Consult an expert for the proper screws/bolts to use when attaching to various wall constructions. Screws provided do not attach to all wall construction types.



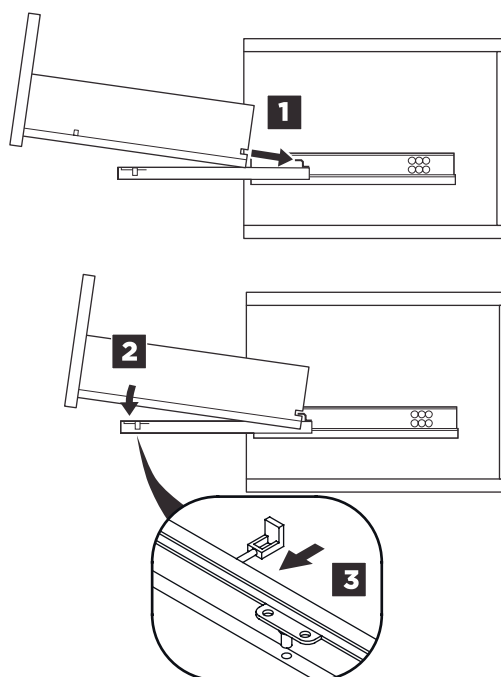
2 Apply a bead of silicone on the top of the cabinet and place the countertop on to the cabinet. Apply a bead of silicone on to the bottom of the sink and place the sink on the countertop.



REMOVAL



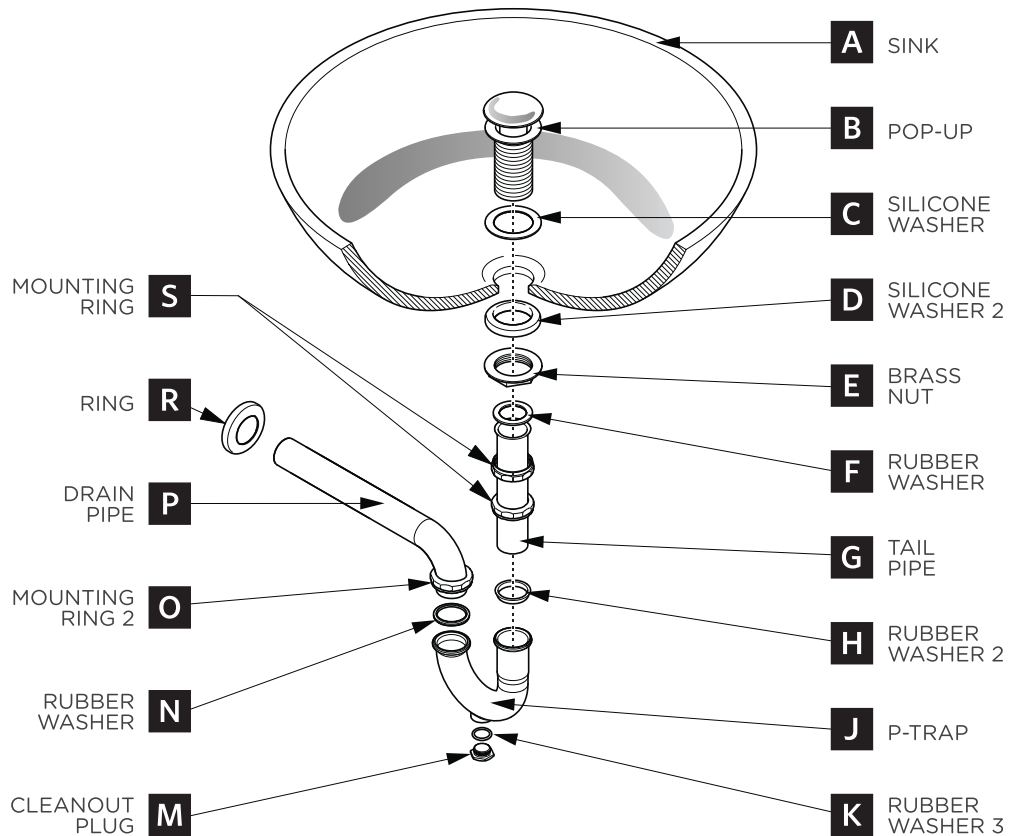
INSTALLATION



P-TRAP & POP-UP

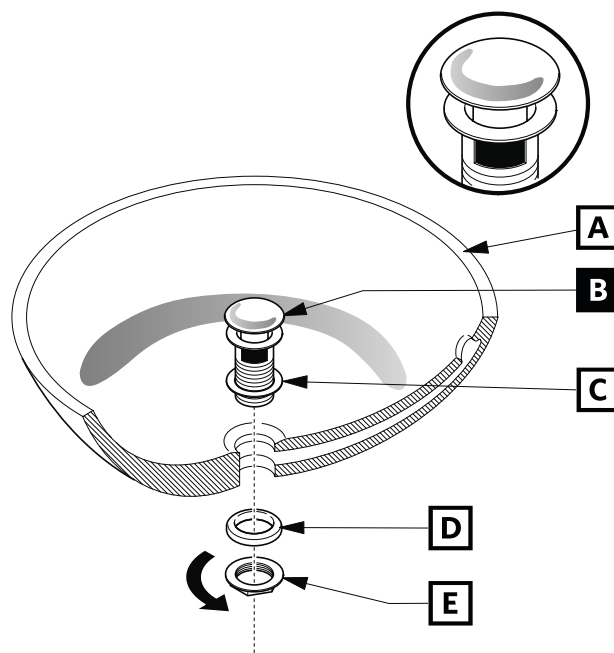
INSTALLATION INSTRUCTIONS

Your item may appear slightly different from the illustration.



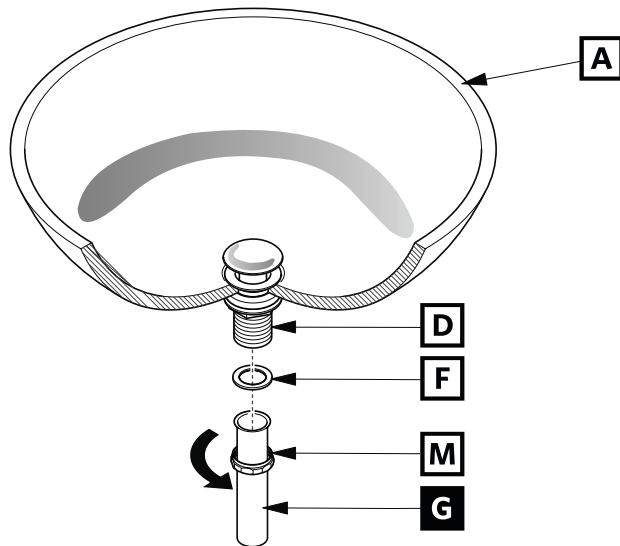
POP-UP INSTALLATION

FOR SINKS WITH OVERFLOW



P-TRAP INSTALLATION

1.



2.

