

## 0.5GPF Low Consumption Washout Urinal

### FEATURES

- Compact urinal with concealed integral trap
- Washout flush action with 3/4" top or back spud inlet
- 0.5 GPF with any flush valve shown below

### MODELS

- UT447E  
Urinal with 3/4" top spud inlet
- UT447EV  
Urinal with 3/4" back spud inlet

### ADDITIONAL ITEMS (sold separately)

- THU3017  
Stainless Steel Urinal Drain Cover

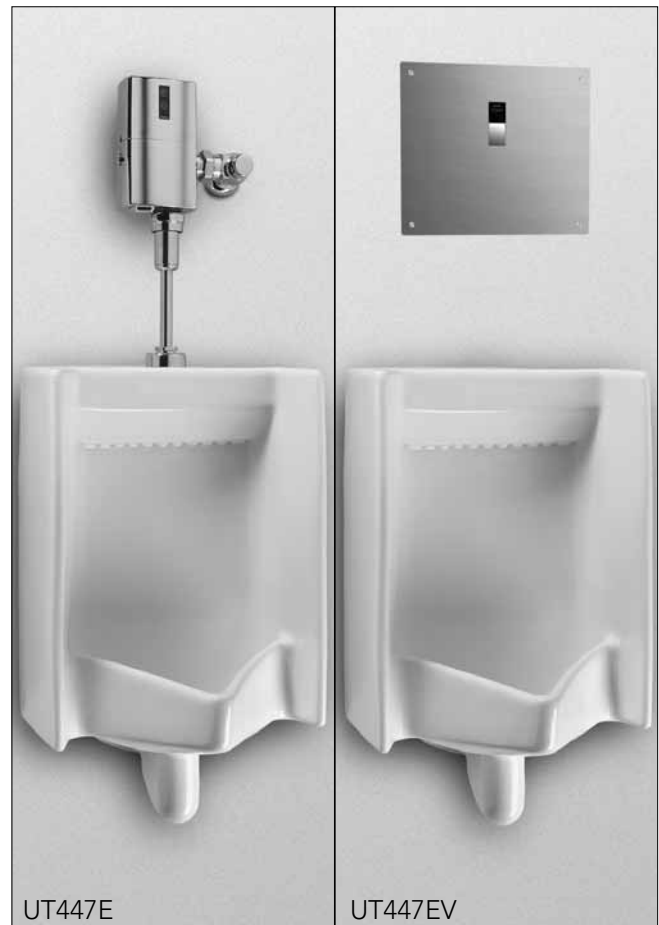
| RECOMMENDED FLUSH VALVES |             |             |
|--------------------------|-------------|-------------|
| UT447E                   |             | UT447EV     |
| EcoPower®                | Manual      | EcoPower®   |
| TEU1LN12#CP              | TMU1LN12#CP | TEU2LN11#SS |
|                          |             | TEU3LN11#SS |

### COLORS/FINISHES

- Standard  
#01 Cotton  
#03 Bone  
#12 Sedona Beige

### PRODUCT SPECIFICATION

The wall-mounted, ADA compliant, low consumption washout urinal shall be 0.5GPF/1.9LPF when paired with a 0.5GPF flushometer valve and 1.0GPF/3.8LPF when paired with 1.0GPF/3.8LPF flushometer valve. Urinal specified shall be model UT447E\_\_\_\_\_.



### CODES/STANDARDS

- Meets and exceeds ASME A112.19.2/CSA B45.1,
- Certifications: IAPMO(cUPC), State of Massachusetts, City of Los Angeles
- Code compliance: UPC, IPC, NSPC, NPC Canada, and others
- Legislative compliance: California AB715, California Green Building Code
- ADA compliant



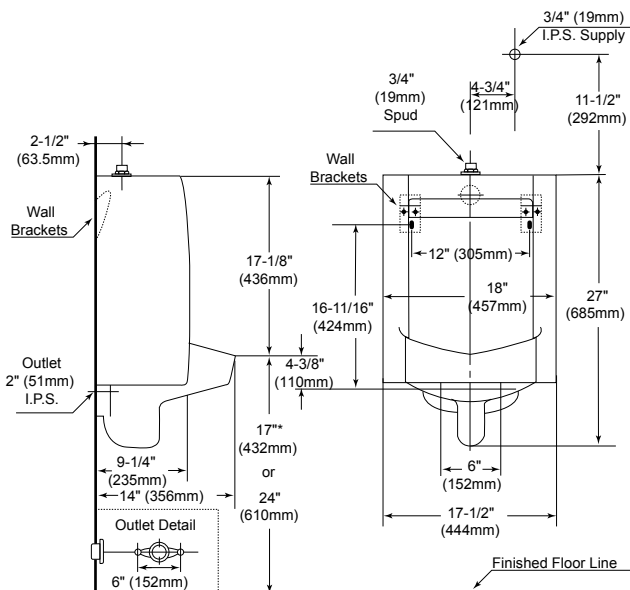
# UT447E(V)

## 0.5GPF Low Consumption Washout Urinal

### SPECIFICATIONS

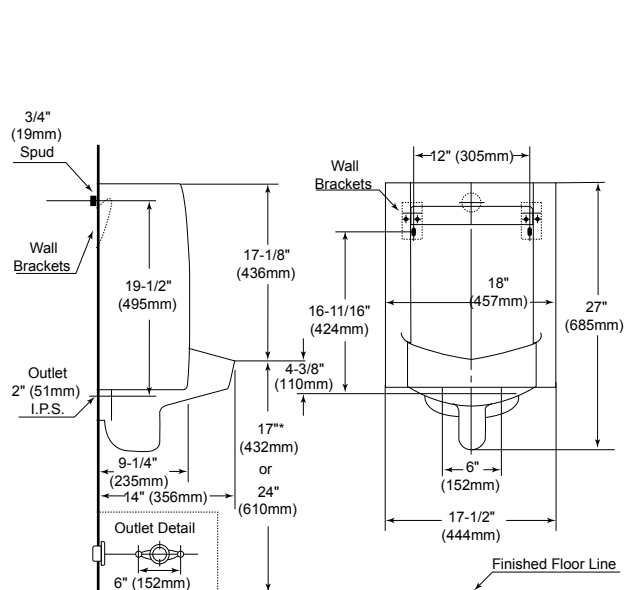
- Water Use 0.5GPF/1.9LPF
- Flush System Washout flush action
- Warranty One Year Limited Warranty
- Material Vitreous china
- Min. Water Pressure 15 psi (flowing)
- Height (Urinal Only) 27-3/16"
- Width 18"
- Rim 14"
- Shipping Weight UT447E(V) - 60lbs
- Shipping Dimensions UT447E(V)  
29-7/8" L x 16-3/4"  
W x 19-1/8" H

UT447E



\*For ADA installation refer to local codes

UT447EV



\*For ADA installation refer to local codes

**TOTO**

These dimensions and specifications are subject to change without notice