

Focus S

Commercial S Pressure Balance Trim

Finishes : **chrome** Part no. : **04205000**



Description

Features

- Flow: 4.5 GPM
- Integrated bypass for use with diverter tub spouts
- Temperature and on/off control for 1 outlet

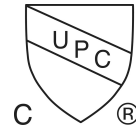
Required accessories

- Rough, Pressure Balance (#04120USA)
- Rough, Pressure Balance with Service Stops (#04121USA)

Item details

List Price \$ 129.00

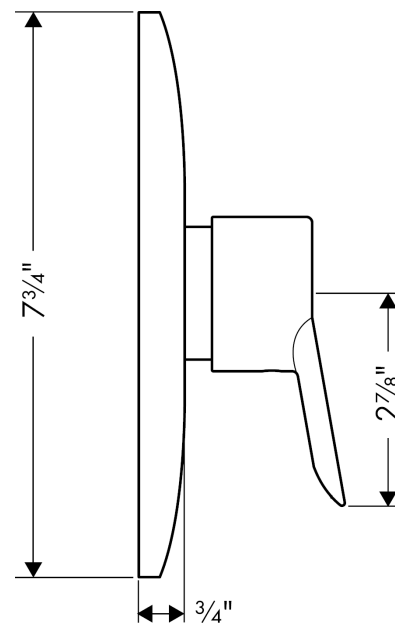
Compliance



Product image



Scale drawing



Focus S

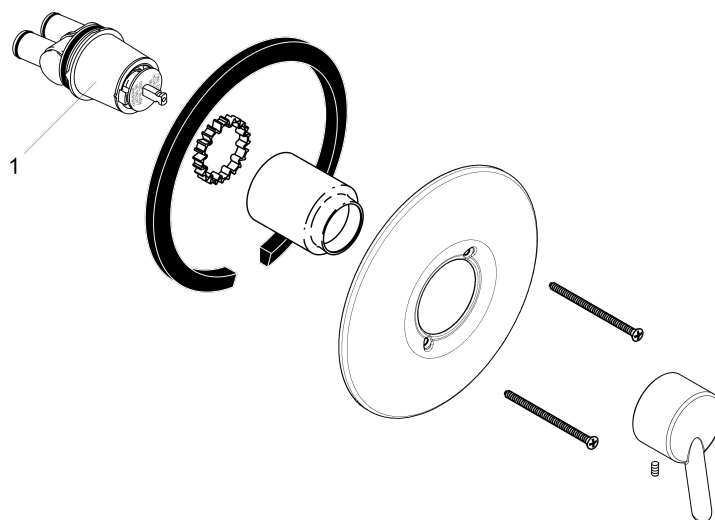
Commercial S Pressure Balance Trim

Finishes : **chrome** Part no. : **04205000**



Exploded drawing

Year of production: >10/08



Focus S

Commercial S Pressure Balance Trim

Finishes : **chrome** Part no. : **04205000**



Spare parts list

Year of production: >10/08

Pos.	Description	Part no.	Price	PU
1	cartridge, assy	88727000	-	1
a	base body	04120181	-	1
b	base body	04121181	-	1