



California Faucets®

SLIDE BAR

Traditional handshower slide bar

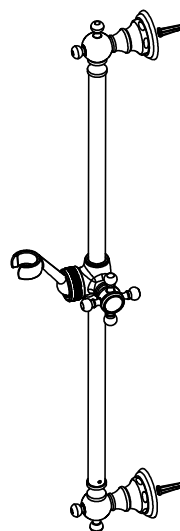
Features

- Over 30 finishes including 11 PVD finishes
- All brass construction
- Matching handle & escutcheon for all California Faucets series
- Bar pivots 180° without loosening slide handle
- Handshower holder slides up and down on bar
- Handshower holder angle is adjustable
- Handshower holder accepts conical end of hose
- Right or left handed based on installation
- Includes all mounting hardware
- See www.calfaucets.com for complete selection

Codes/Standards Applicable

Specified model meets or exceeds the following:

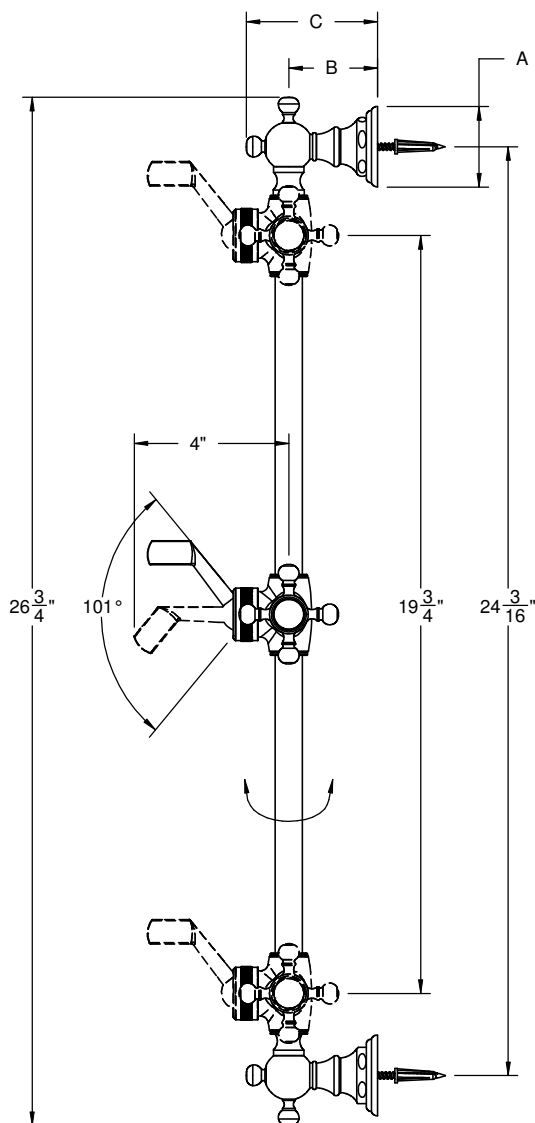
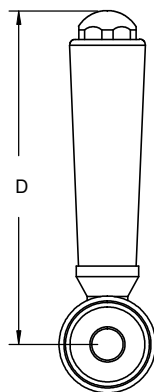
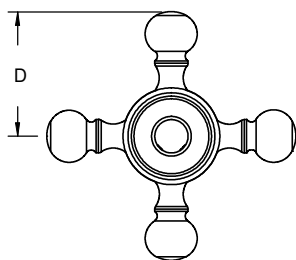
- ASME A112.18.1/CSA B125.1
- ADA (all lever handles)



SB-XX

XX = SERIES HANDLE

| TABLE (ALL DIMENSIONS SHOWN IN INCHES) | | | | |
|--|---------------------------------|---------------------------------|---------------------------------|---------------------------------|
| SERIES | A | B | C | D |
| 33 | 2 ¹ / ₈ | 2 ⁹ / ₁₆ | 3 ¹¹ / ₁₆ | 3 ¹ / ₂ |
| 34 | 2 ¹ / ₈ | 2 ⁹ / ₁₆ | 3 ¹¹ / ₁₆ | 1 ¹ / ₈ |
| 35 | 2 ¹ / ₈ | 2 ⁹ / ₁₆ | 3 ¹¹ / ₁₆ | 3 ⁷ / ₁₆ |
| 36 | 2 ¹ / ₈ | 2 ⁹ / ₁₆ | 3 ¹¹ / ₁₆ | 3 ¹ / ₁₆ |
| 38 | 2 ⁷ / ₈ | 2 ¹¹ / ₁₆ | 3 ³ / ₄ | 2 ⁷ / ₈ |
| 40 | 2 ¹³ / ₁₆ | 2 ⁵ / ₈ | 3 ³ / ₄ | 3 ¹ / ₄ |
| 42 | 2 ¹³ / ₁₆ | 2 ⁵ / ₈ | 3 ³ / ₄ | 2 ¹⁵ / ₁₆ |
| 46 | 2 ⁵ / ₁₆ | 2 ³ / ₈ | 3 ¹ / ₂ | 3 ⁷ / ₁₆ |
| 47 | 2 ⁵ / ₁₆ | 2 ³ / ₈ | 3 ¹ / ₂ | 1 ³ / ₈ |
| 50 | 2 ⁹ / ₁₆ | 2 ⁵ / ₁₆ | 3 ³ / ₈ | 2 ¹³ / ₁₆ |
| 51 | 3 ¹ / ₄ | 2 ¹¹ / ₁₆ | 3 ¹³ / ₁₆ | 1 ¹ / ₁₆ |
| 55 | 2 ¹³ / ₁₆ | 2 ⁵ / ₈ | 3 ³ / ₄ | 3 ⁵ / ₁₆ |
| 59 | 2 ¹³ / ₁₆ | 2 ¹³ / ₁₆ | 3 ⁷ / ₈ | 3 |
| 60 | 2 ¹ / ₈ | 2 ⁵ / ₁₆ | 3 ⁷ / ₁₆ | 1 ⁵ / ₁₆ |
| 63 | 2 ⁵ / ₁₆ | 2 ³ / ₈ | 3 ¹ / ₂ | 1 ⁹ / ₁₆ |
| 64 | 2 ¹³ / ₁₆ | 2 ¹³ / ₁₆ | 3 ⁷ / ₈ | 3 ⁵ / ₁₆ |
| 67 | 2 ¹ / ₈ | 2 ⁵ / ₁₆ | 3 ⁷ / ₁₆ | 1 ³ / ₈ |
| 68 | 2 ¹ / ₈ | 2 ⁹ / ₁₆ | 3 ¹¹ / ₁₆ | 3 ³ / ₈ |
| 69 | 2 ¹ / ₈ | 2 ⁹ / ₁₆ | 3 ¹¹ / ₁₆ | 3 ¹ / ₂ |



ALL DIMENSIONS SHOWN TO NEAREST 1/16"



California Faucets®

SHOWER

Handshower supply elbow

Features

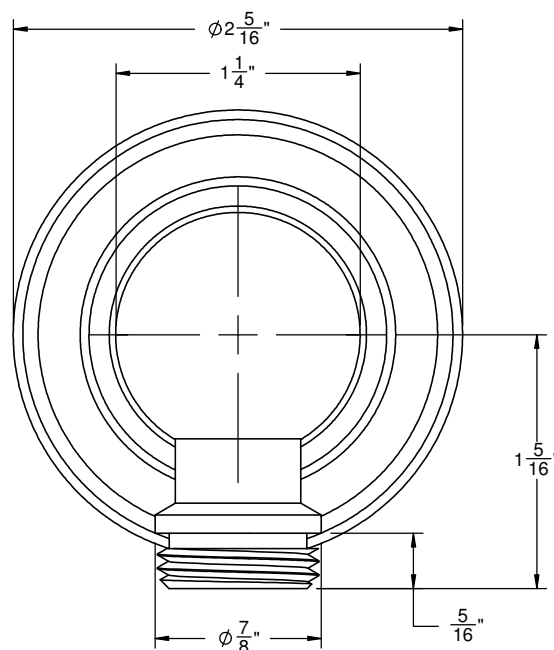
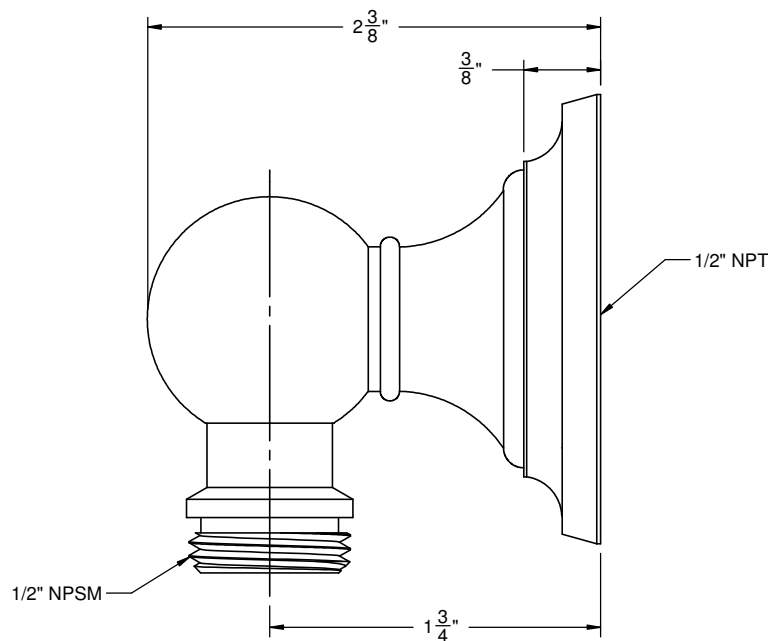
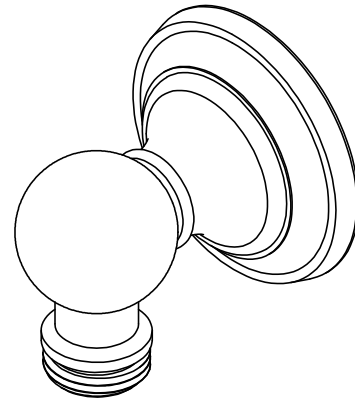
- Over 30 finishes including 14 PVD finishes
- Solid brass construction
- 1/2" NPT (female) inlet connection
- 1/2" NPSM (male) outlet connection

Codes/Standards Applicable

Meets or exceeds the following at date of manufacture:

- ASME A112.18.1/CSA B125.1

SH-10-48



ALL DIMENSIONS SHOWN TO NEAREST 1/16"