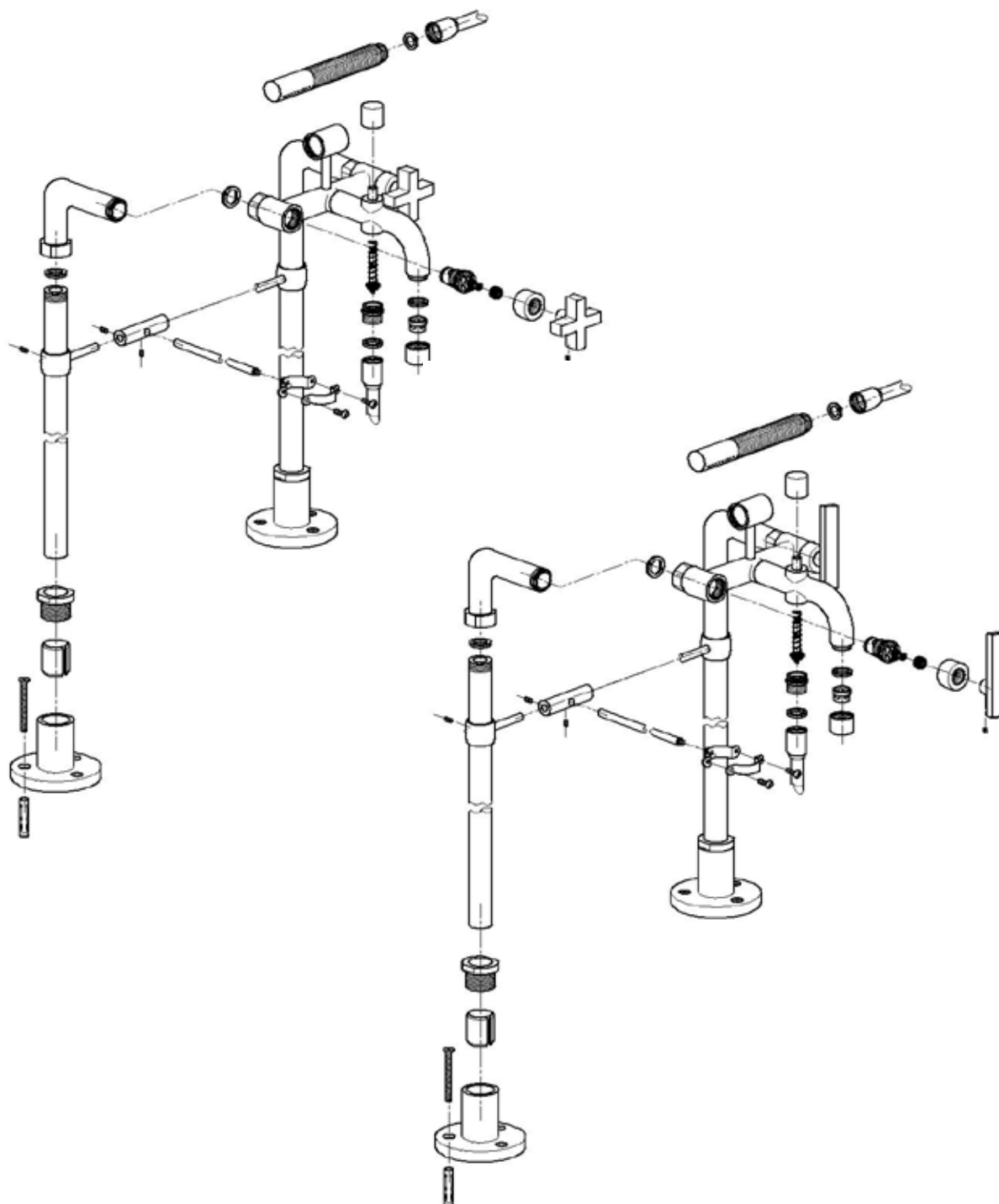


ROHL®

The Experience of Authentic Luxury™

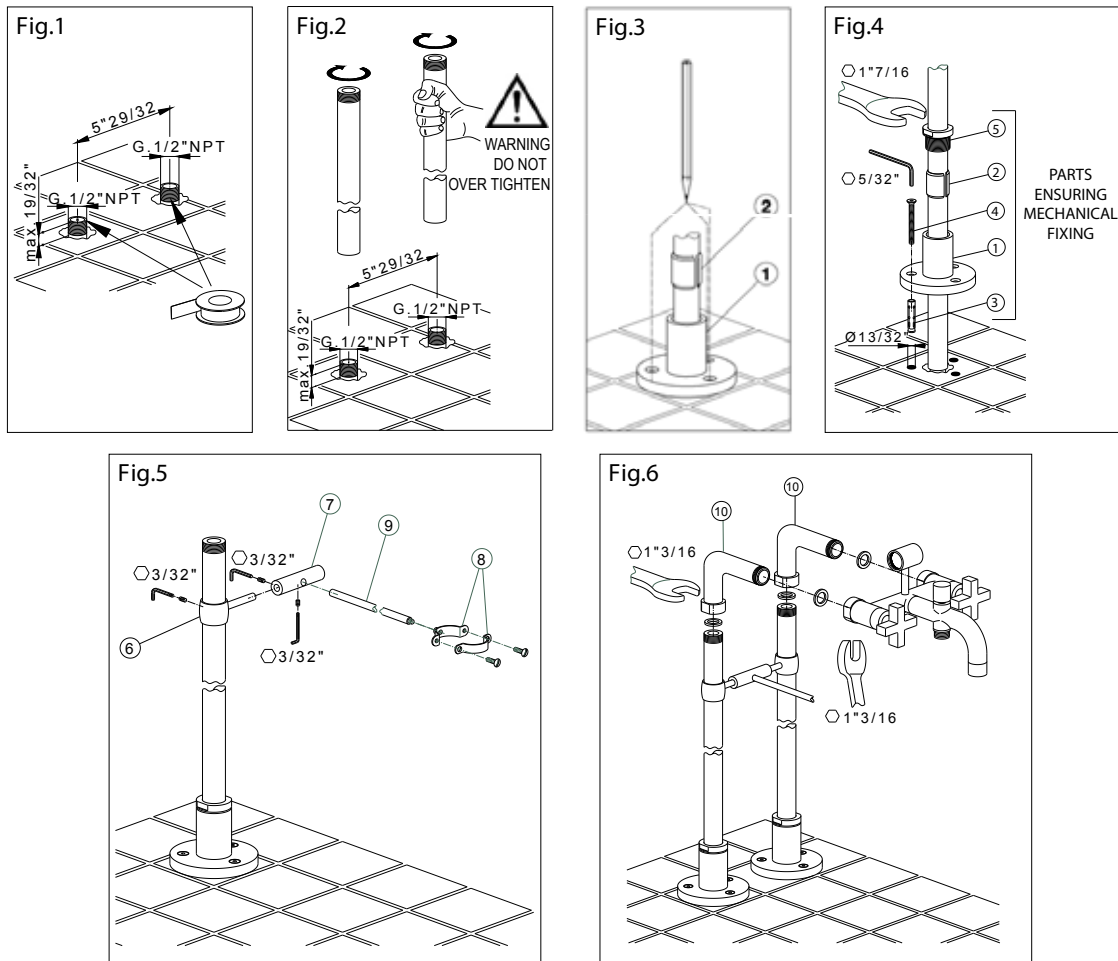
www.rohlhome.com

BA420 SPARE PARTS



INSTALLATION INSTRUCTIONS

ASSEMBLY INSTRUCTIONS FOR ART. ZA10383



Installation requirements: 2 x 1/2" NPT male stub outs at 5 29/32" centers

Please note: if installing with an Italian Country Bath exposed tub filler you must install a set of adaptors, C5574EXT

Fig.1 Apply Teflon tape to the male connection.

Fig.2 Hand tighten, then turn with a strap wrench 1/2 to 3/4 turn to make a seal.
WARNING: Do not over tighten. Over tightening could cause the brass to crack.
Test for leaks before installing floor escutcheons.

Please note that the threaded connection only ensures hydraulic water tightness, please note that mechanical fixing of floor legs is ensured by the whole part assembly of components listed as 1-2-3-4-5 in Picture4.

Fig.3 Slide on base escutcheons (1) and the cut bushings (2).
Mark the screw holes for drilling.

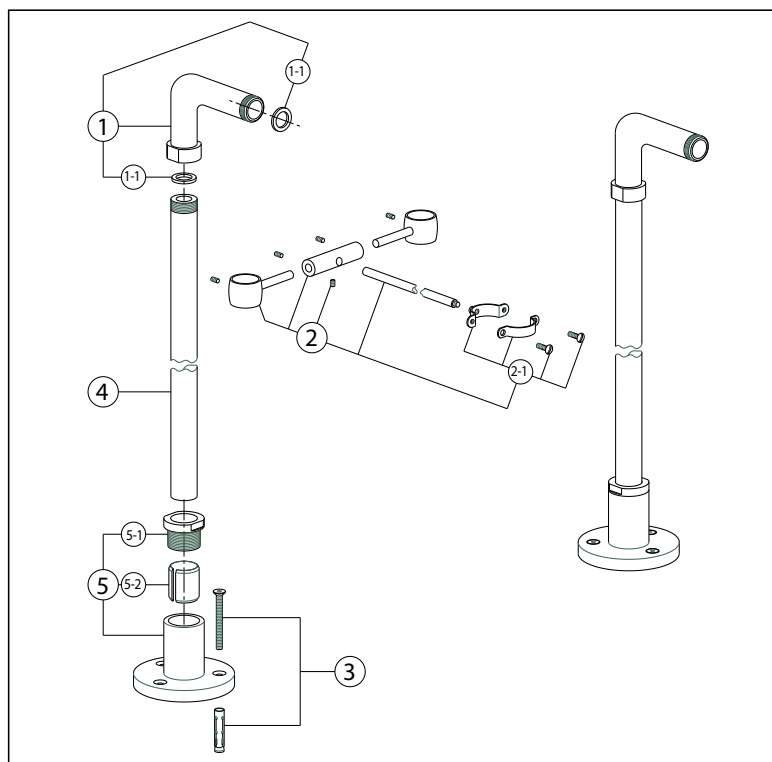
Fig.4 Drill a hole using a 13/32" drill and install floor anchors (3).
Slide the base escutcheons (1) to the floor, align with holes and tighten allen screws (4) using a 5/32" wrench.
Insert the cut bushings (2) into the base escutcheons (1) and slide on the threaded ring (5). Tighten using a 1 7/16" wrench.

Fig.5 Install waste tube connection rings (6) into the horizontal sleeve (7) and slide onto pillar legs.
Screw the clamp (8) to the rod (9) and install the clamp with the rod (8 & 9) onto the horizontal sleeve (7).
Use the clamp to anchor the frame to the overflow pipe of the tub drain.
Square off the installation and tighten allen screws using a 3/32" wrench.

Fig.6 Install elbow unions (10) to pillar legs, using a 1 3/16" wrench, ensuring that all washers create a seal.
Install tub faucet to elbow unions using a 1 3/16" wrench, ensuring all washers create a seal.

INSTALLATION INSTRUCTIONS

SPARE PARTS FOR ZA 383 FLOOR LEGS



POS.	DESCRIPTION	CODE
1	90° union pillar leg	ZZ 93750 0
1-1	Gasket NBR 90 SH. 24x16x2,7	ZZ 92689 0
2	Waste tube connection	ZZ 94083 0
2-1	Waste tube connection	ZZ 94127 0
3	Installation set	ZZ 94343 0
4	G1/2" NPT floor pillar leg	ZZ 94355 0
5	Base for floor pillar leg	ZZ 94356 0
5-1	Fixing ring	ZZ 94357 0
5-2	Cut bush	ZZ 94358 0