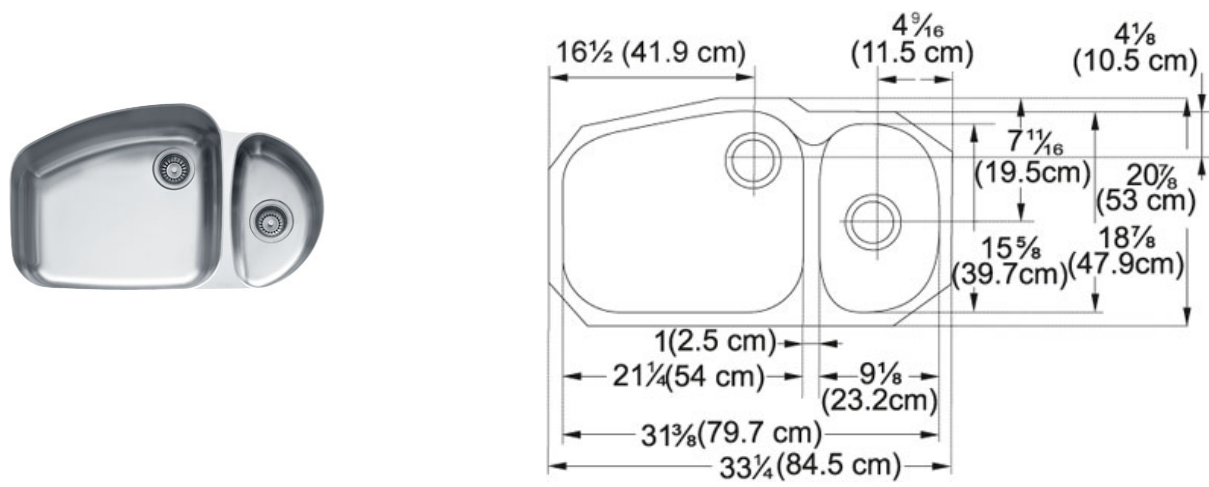


Vision VNX160 Stainless Steel | 122.0035.110

FAMILY : Sinks | SERIE : Vision | MODEL : VNX160 | FINISH : Stainless Steel | INSTALLATION TYPE : Undermount | STYLE : Transitional



Classic and graceful, Vision is future perfect. The Vision sink adds elegant design with durability for versatility in any food preparation. The integral shelf in the large sink supports an option shelf grid for prep work.

TECHNICAL DATA	
Minimum Cabinet Size	39"
Drain Opening	3 1/2"
Length overall	33 1/4"
Length of large bowl	21 1/4"
Width of large bowl	18 7/8"
Depth of large bowl	9 1/16"
Length of small bowl	9 1/8"
Depth of small bowl	5 1/8"
Number of Bowls	2
Type of Material	18 Gauge Stainless Steel
Cut-Out Template	Yes
Installation Clips	Yes
Franke Integral Ledge	BUILT-IN
Where to buy	Showroom
Where to buy	Showroom

Vision VNX160 Stainless Steel | 122.0035.110

FAMILY : Sinks | SERIE : Vision | MODEL : VNX160 | FINISH : Stainless Steel | INSTALLATION TYPE : Undermount | STYLE : Transitional

RECOMMENDED



115.0067.239



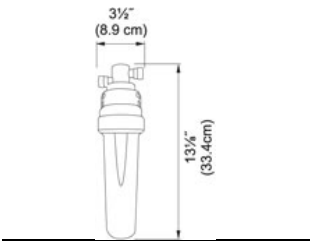
120.0296.745



119.0080.612



134.0297.202



133.0204.098



119.0066.616

