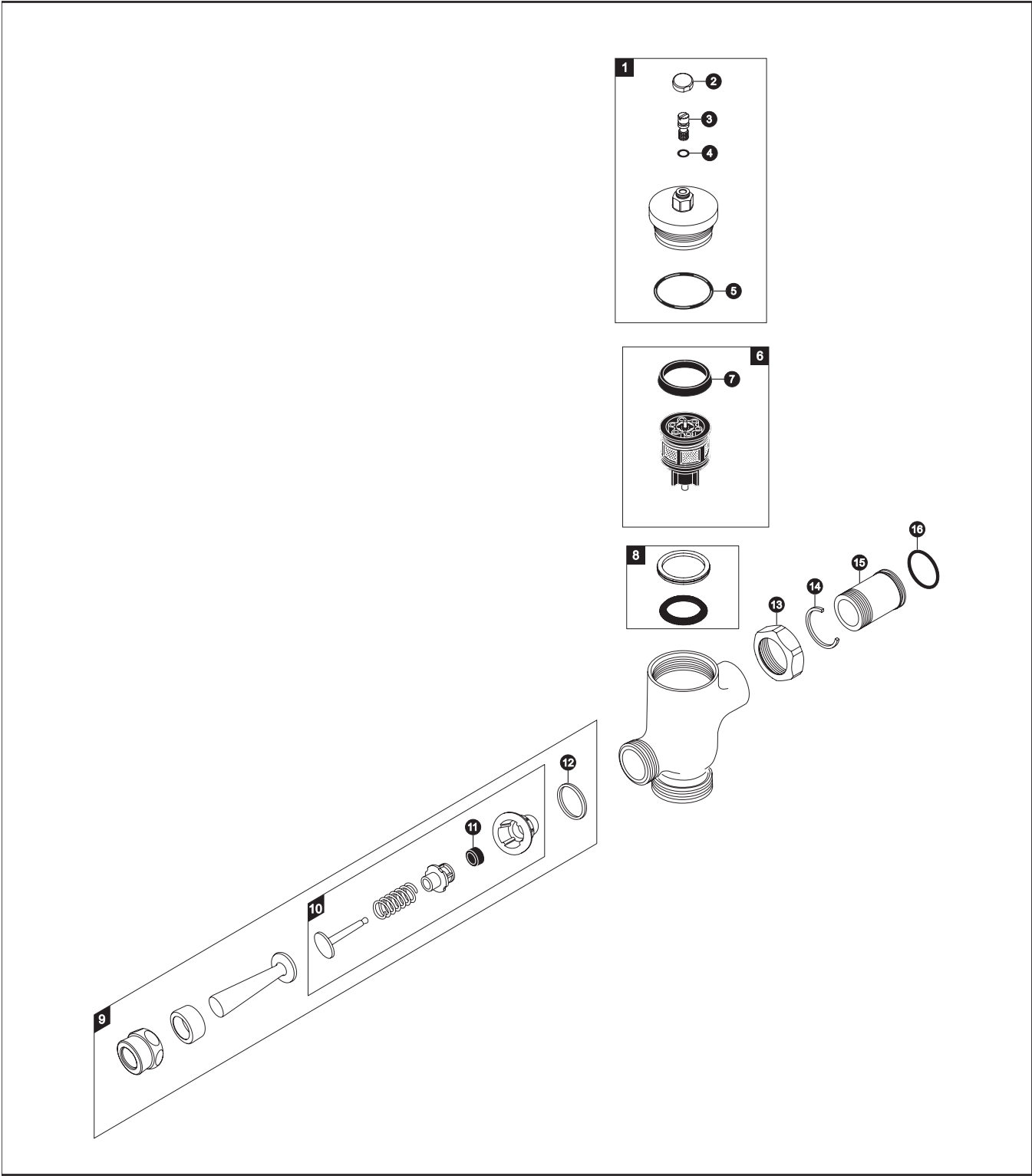


**TMU1NNC Series**

TMU1NNC-12  
TMU1NNC-22  
TMU1NNC

**Manual Urinal Flush Valve, Exposed - 1.0 GPF  
Non-Hold Open**



# TMU1NNC Series

TMU1NNC-12  
 TMU1NNC-22  
 TMU1NNC

## Manual Urinal Flush Valve, Exposed - 1.0 GPF Non-Hold Open

Item	Part	Description	Price	Item	Part	Description	Price
1	TH305SV119	Valve Cover Set (1.0 GPF)	\$47.08				
2	TH305SV108	Screw Cap (MFV & Angle Stop)	\$4.45				
3	TH305SV110	Adjustment Screws (Toilet)(10 Pieces)	\$33.17				
4	TH305SV111	O-Rings (Cap Screw)(10 Pieces)	\$5.56				
5	TH305SV112	O-Rings (Valve Guide)(10 Pieces)	\$7.79				
6	TH323V102	Piston Valve Assembly (1.0 GPF)	\$34.24				
7	TH305SV103	U-Packing (For Piston)(10 Pieces)	\$8.90				
8	TH321	Seal Washer Kit	\$5.56				
9	TH305SV1	Lever Assembly					
10	THY326	Push Button Assembly	\$8.56				
11	TH302RV100	Gaskets (U-Packing)(10 Pieces)	\$6.68				
12	TH305SV104	Fiber Washers (10 Pieces)	\$8.90				
13	TH305SV113	Nut	\$7.79				
14	TH305SV105	Locking Rings (10 Pieces)	\$11.13				
15	TH305SV114	Tail Piece	\$12.24				
16	TH305SV106	O-Rings (Tail Piece)(10 Pieces)	\$5.56				
<b>Vacuum Breaker Sets</b>							
	VB9CP-12	Exposed - Top Spud (3/4" Outlet)	\$58.00				
	VB9CP-22	Exposed - Top Spud (1-1/4" Outlet)	\$58.00				

**Notes**

For additional information, refer to the individual vacuum breaker parts sheets.

### Product Number Explanations

**Flush Valve**

(T) Fitting  
 (M) Manual  
 (U) Urinal 1.0  
 (1) Exposed  
 (N) Non-Hold Open  
 (N) Neutral Rough-In  
 (C) Chrome Finish  
 (1) 3/4" Outlet  
 (2) Top Spud

**Flush Valve**

(T) Fitting  
 (M) Manual  
 (U) Urinal 1.0  
 (1) Exposed  
 (N) Non-Hold Open  
 (N) Neutral Rough-In  
 (C) Chrome Finish  
 (2) 1-1/4" Outlet  
 (2) Top Spud