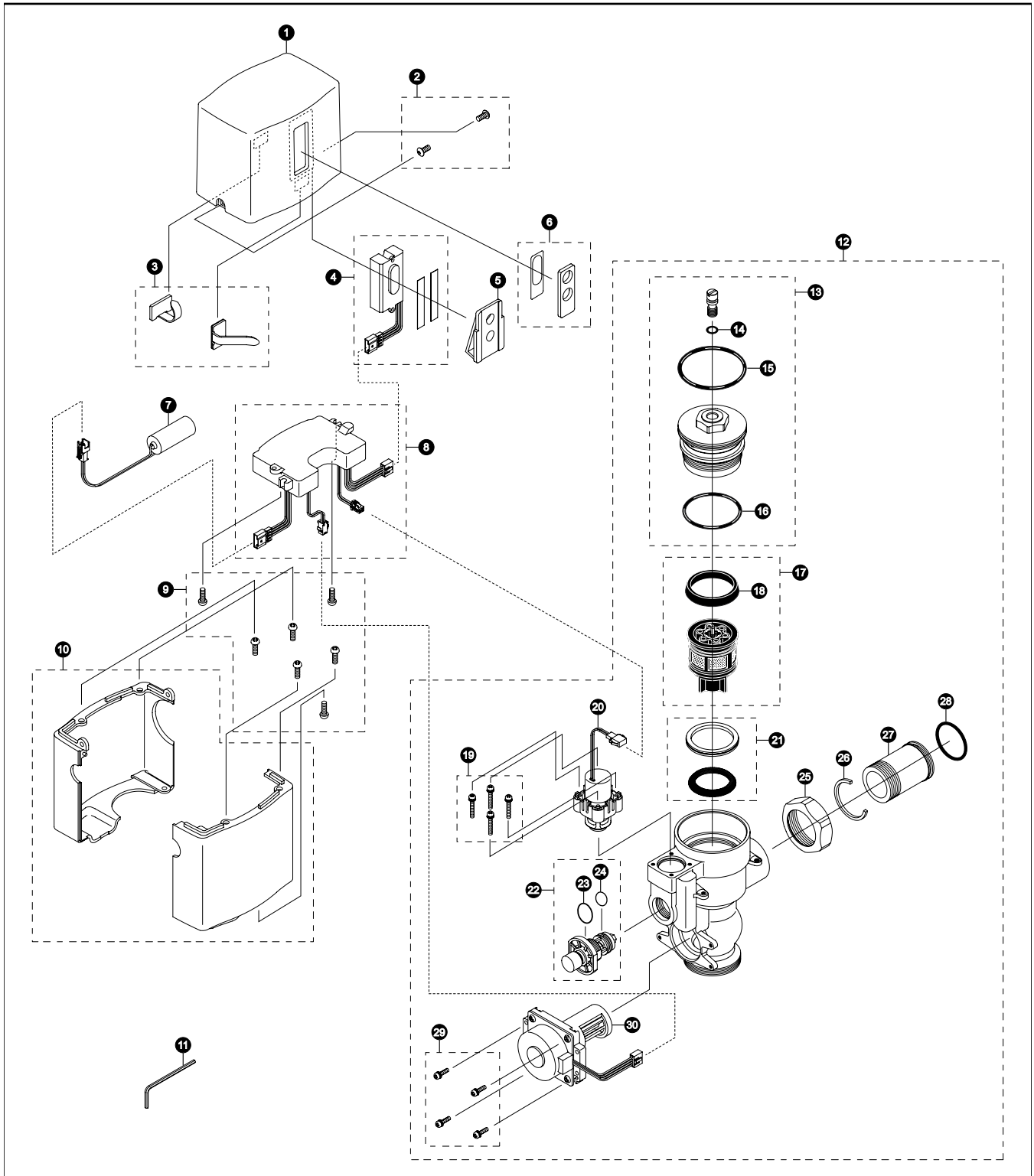


TEU1GNC Series

TEU1GNC-12
TEU1GNC-22
TEU1GNC

EcoPower™ Sensor Urinal Flush Valve Exposed - 1.0 GPF Hydro-Power Charge



TEU1GNC Series

TEU1GNC-12
TEU1GNC-22
TEU1GNC

EcoPower™ Sensor Urinal Flush Valve Exposed - 1.0 GPF Hydro-Power Charge

Item	Part	Description	Item	Part	Description
1	TH559EDV511	Top Cover	Vacuum Breaker Sets		
2	8HU5016R	Vandal Resist Set Screw & Allen Wrench Kit M4 Set	VB9CP-12		Exposed - Top Spud (3/4" Outlet)
3	TH559EDV517	Clamp Set	VB9CP-22		Exposed - Top Spud (1-1/4" Outlet)
4	TH559EDV515	Sensor Controller & Packing Set	Notes		
5	TH559EDV516	Holder	For additional information, refer to the individual vacuum breaker parts sheets.		
6	TH559EDV514	Glass & Packing Set			
7	THP3053	Back-Up Battery			
8	TH559EDV519	Controller (Urinal)			
9	TH559EDV513	M4 Screws (5 pieces)			
10	TH559EDV512	Lower Cover Set			
11	TH559EDV521	Allen Wrench			
12	TH559EDV502	Valve Body For Exposed (Urinal 1.0GPF)			
13	TH559EDV508	Valve Cap Assy (Toilet 3.5 GPF)(Urinal 1.0 GPF)			
14	TH305SV111	O-Rings (Cap Screw)(10 Pieces)			
15	TH305SV120	O-Rings (Valve Cap)(10 Pieces)			
16	TH305SV112	O-Rings (Valve Guide)(10 Pieces)			
17	TH323V104	Piston Assembly (1.0 - 3.5 GPF)			
18	TH305SV103	U-Packing (For Piston)(10 Pieces)			
19	TH559EDV301	Double Sems Screws M3 (4 pieces)			
20	TH559EDV510	Solenoid Unit & Diaphragm Assy			
21	TH321	Seal Washer Kit			
22	TH559EDV506	Manual Flushing Button			
23	O-Rings (Manual Flushing Button)			
24	O-Rings (Manual Flushing Button)			
25	TH305SV113	Nut			
26	TH305SV105	Locking Rings (10 Pieces)			
27	TH305SV114	Tail Piece			
28	TH305SV106	O-Rings (Tail Piece)(10 Pieces)			
29	TH559EDV505	Double Sems Screws M3 (4 pieces)			
30	TH559EDV504	Hydro-Power Generator (Urinal)			

Product Number Explanations

Flush Valve

(T) Fitting
(E) Electronic
(U) Urinal 1.0 Gpf
(1) Exposed
(G) Dynamo (Hydro Generator)
(N) Neutral Rough-In
(C) Chrome Finish
(1) 3/4" Outlet
(2) Top Spud

Flush Valve

(T) Fitting
(E) Electronic
(U) Urinal 1.0 Gpf
(1) Exposed
(G) Dynamo (Hydro Generator)
(N) Neutral Rough-In
(C) Chrome Finish
(2) 1-1/4" Outlet
(2) Top Spud