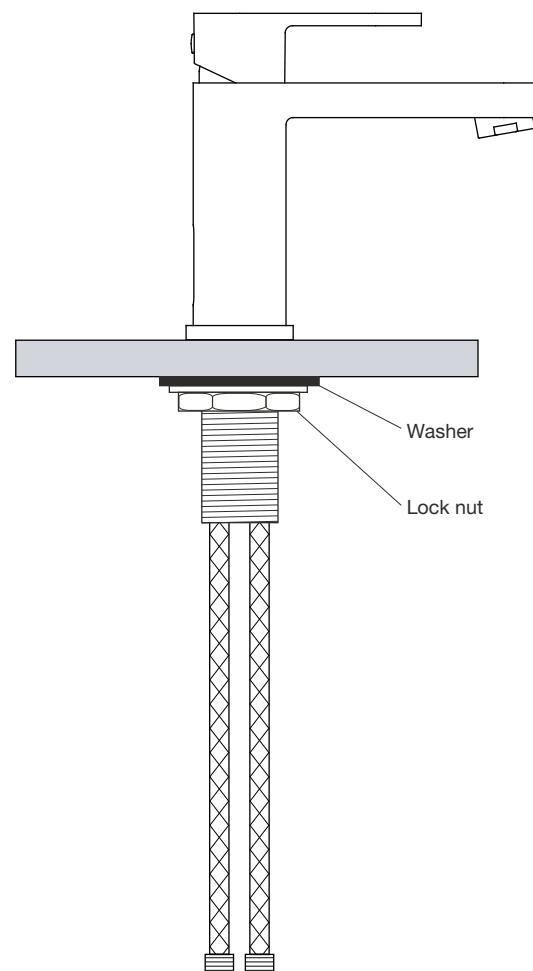


KEEP THIS INSTRUCTION BOOKLET FOR FUTURE REFERENCE

Important : Please register your product online at www.santecfaucet.com within 30 days of purchase. Santec reserves the right to request additional documents before servicing warranty requests.

Spout

Hole size for the spout is a minimum of 1-3/8" and a maximum of 1-7/16".



Spout

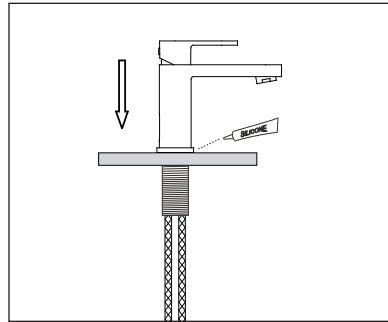
Spout Installation

SPOUT ASSEMBLY IS READY FOR SIMPLE DROP-IN INSTALLATION. **DO NOT DISASSEMBLE.**

A Remove the washer and lock nut from the valve body.

Apply a ring of silicone caulking around the spout hole on the sink or counter top (do not use plumber's putty which can damage the finish of your faucet).

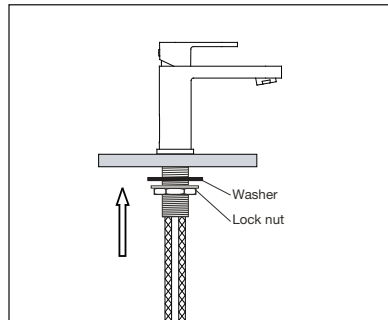
Insert lavatory assembly through the spout hole. Make sure to center the lavatory over hole.



B Re-install the washer and lock nut from below.

Hand tighten lock nut from below while properly aligning the fixture.

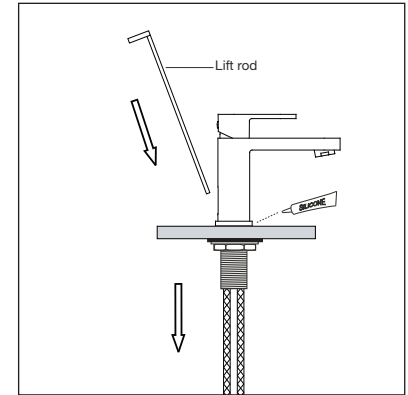
Secure from below with an adjustable wrench and connect the inlet hoses to the supply lines. Make sure that the hot inlet hose connects to the hot supply line, and the cold inlet hose connects to the cold supply line.



Spout

Spout Installation

C Carefully fit the lift rod into the back of the fixture.



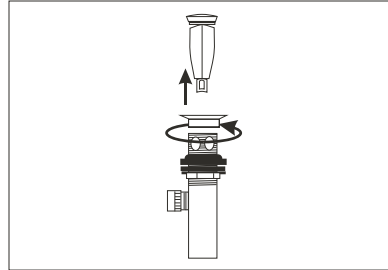
D IMPORTANT: After all the connections have been made from inlet supplies to angle stop, remove the aerator. Open the lever on the lavatory. Slowly open angle stop from below and flush the lines for approximately 45 seconds to clean any debris. Turn off the water and reinsert aerator. Debris present in the line will damage fixture and cause leaking. Failure to flush fixture could result in possibly voiding warranty.

Pop-Up Drain

Pop-Up Drain Installation

- A** Remove the drain flange and drain plug from pop-up assembly.

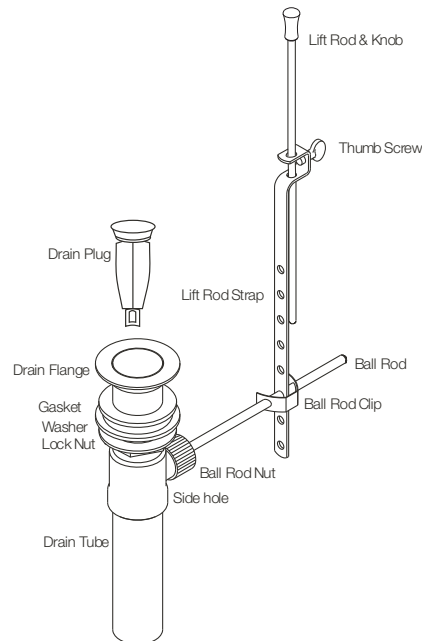
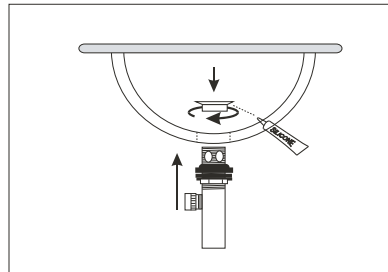
Do not remove the gasket, washer and lock nut.



- B** Apply a ring of silicone caulking underneath the drain flange (do not use plumber's putty).

Insert the threaded end of the assembly up from under the sink. Completely thread the drain flange onto the top of the drain tube.

Tighten the locknut from under the sink.



Pop-Up Drain

Pop-Up Drain Installation

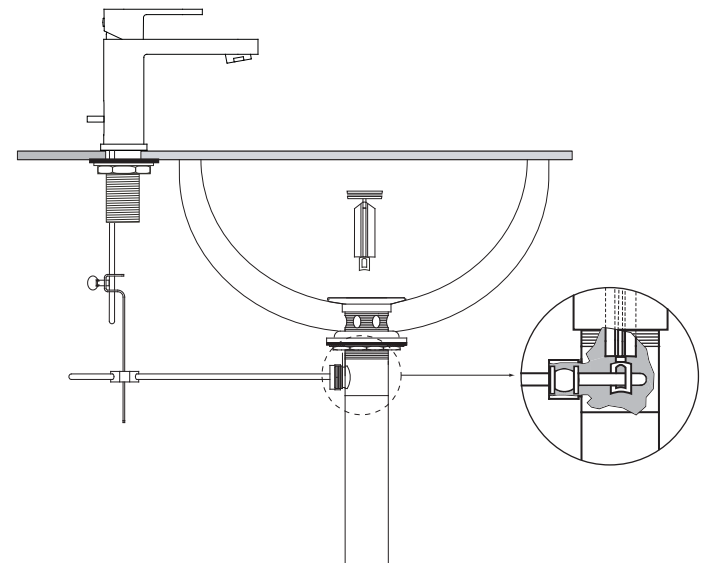
- C** Insert drain plug into drain flange. Make sure the adjustable eye-screw of the drain plug is facing back so that the ball rod will properly fit into it.

Insert ball rod washer into drain body followed by the ball rod, 2nd washer and ball rod nut. Tighten the ball rod nut so that the ball rod moves freely.

Slip the faucet's lift rod through the holes at the top of the lift rod strap and hand tighten the thumb screw. Push the ball rod down so the drain plug is in the up position.

Slip one leg of the ball rod clip onto the ball rod and slide the lift rod strap onto the ball rod using the nearest hole. Then slide the second leg of the clip onto the rod.

Test pop-up for smooth operation and adjust the strap if necessary.





SANTEC LIFETIME LIMITED WARRANTY

1. **Finishes:** Santec Polished Chrome, Polished Nickel and Satin Nickel finishes carry a Lifetime Limited warranty against manufacturing defects and tarnish to the original purchaser with the exclusion of kitchen drain assemblies which, due to the nature of their use, are not warranted. Santec recommended custom finishes carry a ten (10) years limited warranty against manufacturing defects and tarnish to the original purchaser with the exclusion of kitchen and pop-up drain assemblies which, due to the nature of their use, are not warranted. Kitchen products carry a three (3) year limited warranty.
2. **Cartridges:** Santec Cartridges carry a lifetime limited warranty against manufacturing defects for the life of the product to the original purchaser.
3. **Parts:** Santec parts carry a ten (10) year limited warranty against manufacturing defects, to the original purchaser. Kitchen products carry a five (5) year limited warranty.
4. **Warranty exclusions and limitations:** This warranty does not cover: damage due to negligence, accident, abuse, improper installation, or improper maintenance such as, but not limited to: heat from soldering during installation, the use of plumbers putty, damage from tools used during installation, the use or exposure to chemicals or cleaning products either abrasive or non abrasive or the use of any cleaning tool or product other than a soft, clean cloth. Pop-up assemblies are not covered under warranty. This warranty does not cover: changes in the finish or in the product due to normal wear or aging and does not cover any products or parts which have been altered or used in a manner not typical for the product. This warranty does not cover and Santec will not be held liable for damage to products caused by the freight carrier and a claim should be made immediately to the freight carrier should this occur. This warranty does not cover any cost involved in the installation, repair, or replacement of any Santec product or part. This warranty does not cover and Santec will not be held liable for any loss, damages, or expenses, incidental or consequential whatsoever, originating from the purchase, installation, use, repair, failure, or replacement of any Santec product or part, as allowed by law. The product or components of the covered product will either be repaired, refinished or replaced, at the sole discretion of Santec. Santec reserves the right to examine any product claimed defective prior to any warranty claim being accepted or processed, at its sole discretion. This warranty gives you specific legal rights and you may have other rights which may vary from state to state.

Effective 01/01/09 - Replaces and supersedes any previously issued warranty

FINISH CARE INFORMATION

For clear coated or enamel color finishes:

We recommend that all faucets, drains, etc be gently wiped dry with a soft cloth after use to avoid water spotting and water deposit buildup. A mild liquid hand soap, such as Ivory may be used occasionally if desired. Use of non-abrasive carnauba wax will add protection to the finish and should be used if the faucets will not be dried after use.

For non-clear coated and specialty finishes:

We recommend that all faucets, drains, etc be gently wiped dry with a soft cloth after use to avoid water spotting and water deposit buildup. Use of a non-abrasive carnauba wax is required occasionally.

PLEASE REGISTER YOUR PRODUCT ONLINE FOR WARRANTY SERVICES
www.santecfaucet.com/registration