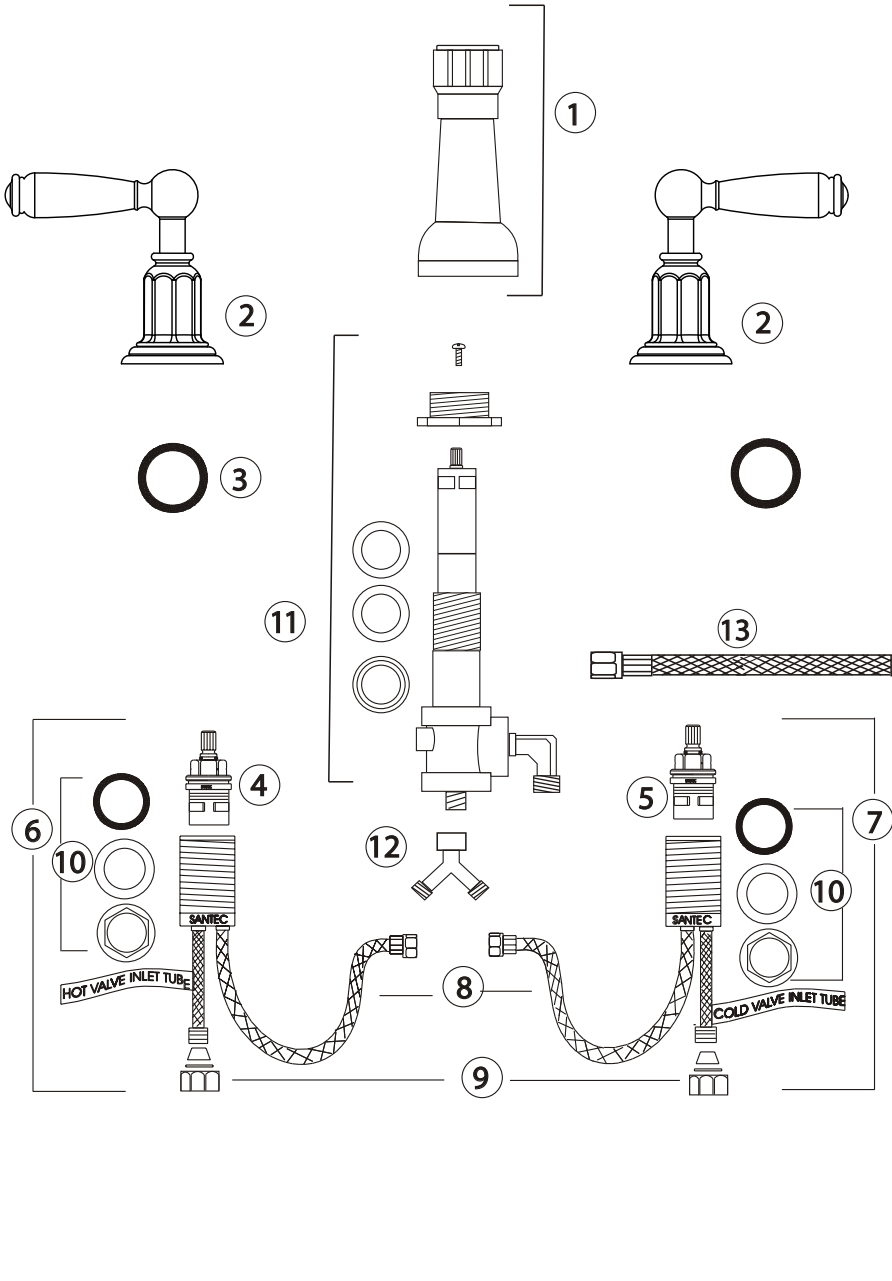


HERITAGE COLLECTION
BIDET FITTING WITH “EY” HANDLES



#	PART DESCRIPTION	PART #
1	Complete Vacuum Breaker Trim *	BD4200-4cap BD4200-1Cylinder BD4200-3 ring
2	Complete EY Lever Handle Assembly *	00EY
3	Washers for Spout & Handle Flanges	PM-400
4	Hot Cartridge Only	P0418
5	Cold Cartridge Only	P0419
6	Complete Hot Valve	P0466
7	Complete Cold Valve	P0467
8	Connecting Hose to the Tee	P0441
9	Connecting Hose to the Supply Line	P0440
10	Valve Body Mounting Hardware	
11	Complete Vacuum Breaker Cartridge	BD4100
12	Y- Connector	PM-B100K
13	Connecting Hose for the Aerator	PM-B100G
14	Aerator Housing, Insert, Flange & Hardware	BD4600-5 housing BD4600-6 Base
15	Complete Lift Knob, Rod and Hardware *	BD4600-8 knob * BD4600-7 flange * BD4600-9 Rod *
16	Complete Pop-Up *	P0202

* Please specify the finish when ordering the part.

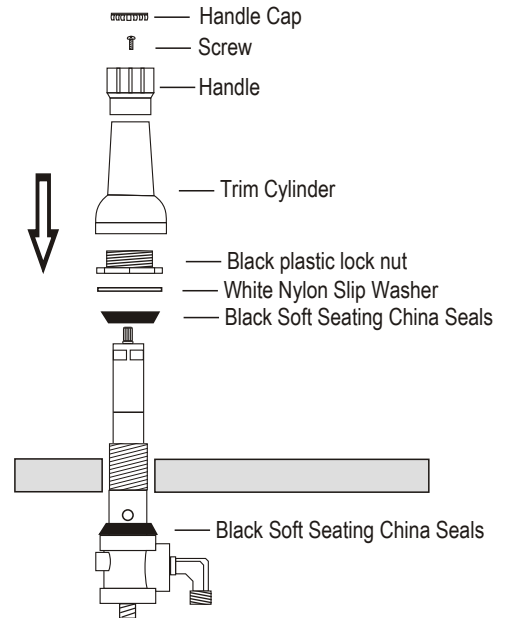
FLUSH BOTH SUPPLY LINES BEFORE INSTALLATION

AFTER FLUSHING , SHUT OFF BOTH SUPPLY LINES.

MINIMUM HOLE SIZE FOR THE SPOUT AND HANDLE TRIM IS 1 1/4" AND MAXIMUM OF 1 1/2"

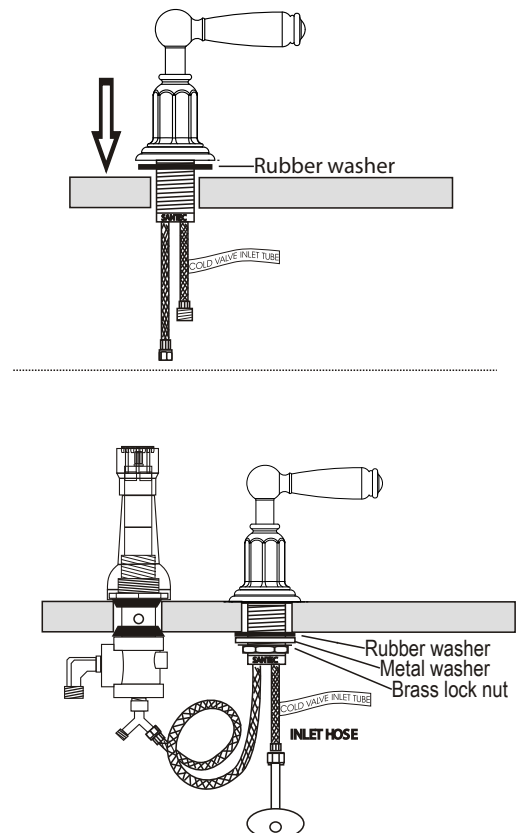
VACUUM BREAKER INSTALLATION

- 1
 - Remove the complete vacuum breaker trim (1) from the cartridge (11).
 - From the underneath of the sink, insert the vacuum breaker cartridge (11) through the center hole of the sink with the one of 2 conical black Soft Seating China Seals inserted.
 - From the top of the sink, insert the second black Soft Seating China Seal, the White Nylon Slip Washer, then the black Plastic Inverted Lock Nut onto the Cartridge (11). Tighten it firmly.
 - Screw the Trim Cylinder onto the Cartridge (11). Tighten Firmly.
 - Slip the Handle onto the Cartridge stem and secure it with the brass screw.
 - Clip the Handle Cap onto the Handle after the installation is complete to check for the water flow options.



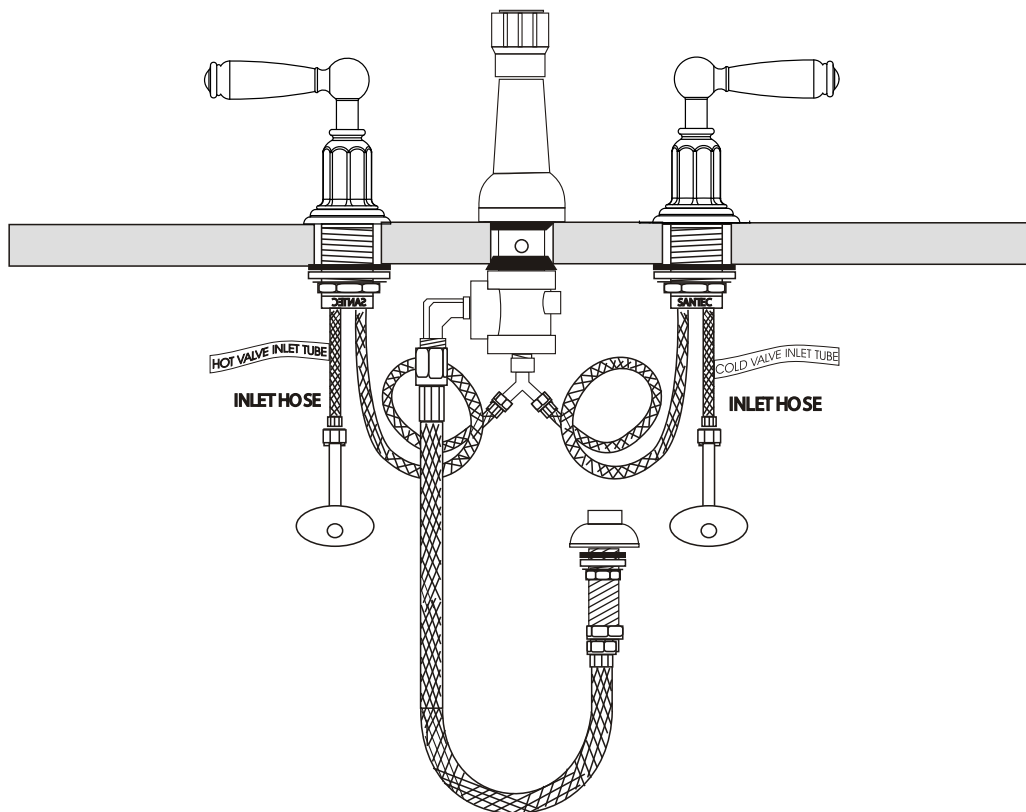
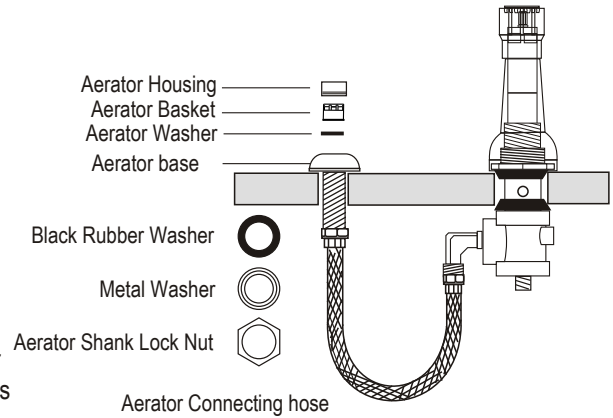
HANDLE TRIM INSTALLATION

- 1
 - For proper handle turning direction, install the handle with the "cold" blue label (7) at the right side of the sink (looking from the front) and the handle with the "hot" red label at the left side of the sink.
 - Both hot and cold side handle trims are pre-assembled for faster installation.
 - Remove the valve body mounting hardware (10) from the valve body. Slip the valve body's flexible hoses from the top of the sink or counter through the appropriate hole next to the vacuum breaker. Make sure the handle flange washer (3) is properly placed underneath of the flange and gently pressed against the sink top. Aim the tee connecting hoses (8) toward the Y-connector (12).
- 2
 - From beneath of the basin or counter, screw the valve body mounting hardware (10) back to the valve body. First the rubber washer, then the white nylon washer and lastly the brass lock nut.
 - Align the lever handle properly against the sink. Tighten the lock nut until it secures the valve body firmly.
- 3
 - Loop and connect the flexible hoses (8) to the Y-Connector (12). Tighten to avoid leakage.
 - Connect and tighten the Inlet hoses (9) to the supply lines.



AERATOR INSTALLATION

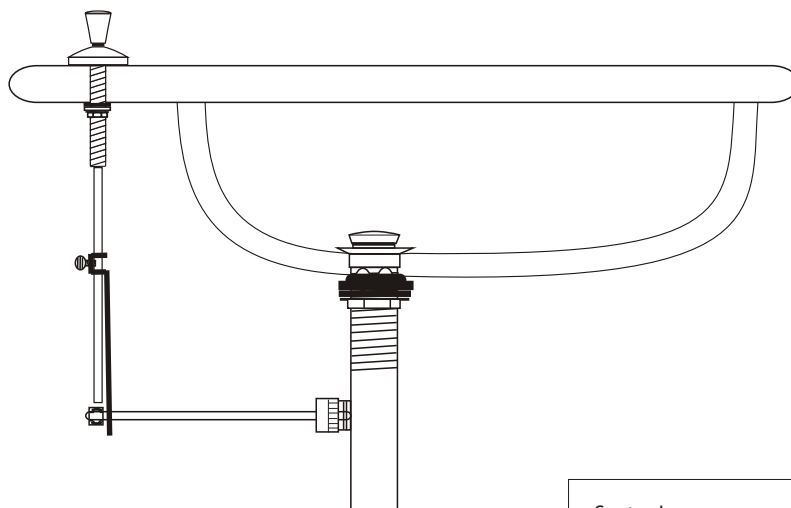
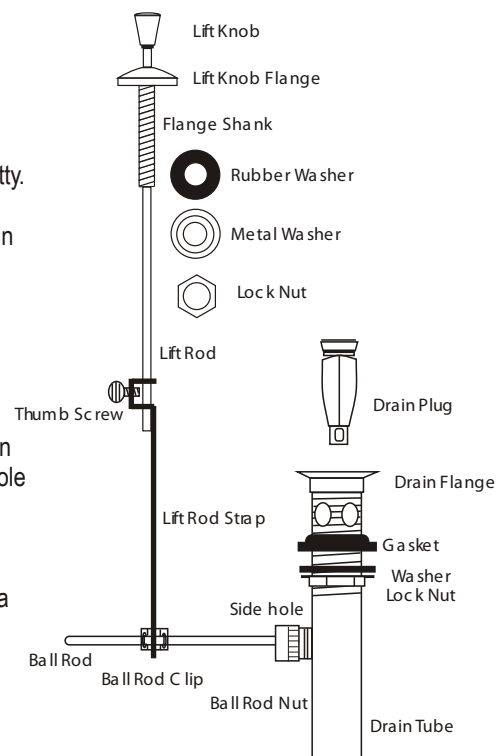
- Insert the Aerator Base with the Washer, Basket and Housing assembled into the hole designated for Aerator on the bidet.
- From beneath of the sink, insert the Black Rubber Washer, the Metal Washer and the Lock Nut. Tighten the Lock Nut firmly against the sink.
- Connect the Aerator Connecting Hose (13) to the Aerator Shank in one side and connect the other side to the side outlet of the Vacuum Breaker Cartridge. Tighten firmly both ends to avoid leakage.
- After the connections have been made, turn on the water supply and check for leakages at all joints. If water leaks from any of the connections tighten the connection until the leakage stops.
- If no leakage, turn the handles to the full open position and let the water flush for 45 second. This can prevent damages to the ceramic cartridges caused by debris in the supply line.



INSTALLATION INSTRUCTIONS

POP UP INSTALLATION

1. Remove the decorative drain flange, drain plug and gasket from pop-up assembly.
Do not remove the washer and lock nut.
2. Place the flange gasket onto the drain tube beveled side upward and on top of the washer.
Apply a ring of silicon caulking around the top of sink drain opening. Do not use plumbers' putty.
3. Insert the threaded end of the assembly up from the under the sink so that the top of the drain tube is through the drain opening. Make sure the bottom of the drain tube is in the p-trap.
4. Completely thread the drain flange onto the top of the drain tube. Hand tighten the locknut from under the sink.
5. Position the drain tube so the side hole in the pop-up faces you.
Place the drain plug into the drain tube so the hole in it is in line with the side hole of the drain tube. Place the short end of the ball rod into the side hole of the drain tube and through the hole in the drain plug and tighten the ball rod nut so the ball rod moves freely.
NOTE: Do not over tighten.
6. Rotate the pop-up so the ball rod faces the back wall and tighten the lock nut giving it an extra 1/4 turn. Hand tighten the nut at the connection with P-trap. Test the rod and pop-up plug by pushing the ball rod up and down to see if it raises and lowers the pop-up.
If not reinstall the ball rod.
7. Slip your faucet's pop-up lift rod through the holes at the top of the lift rod strap and hand tighten the thumb screw. Push the ball rod down so the drain plug is in the up position. Slip the one leg of the ball rod clip onto the ball rod and then slide the lift rod strap onto the ball rod using the nearest hole. Then slide the second leg of the clip onto the rod. Test the pop-up for smooth operation and adjust the strap if necessary.



Santec Inc.
3501 Challenger Street, Torrance, CA 90503
Tel: (310) 542-0063 Fax (310) 542-5681
www.santecfaucet.com

03/03