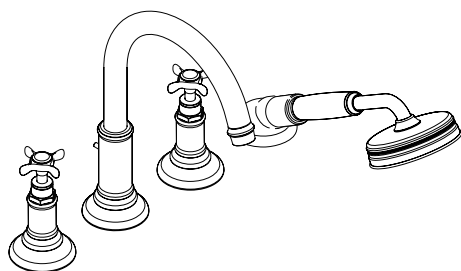


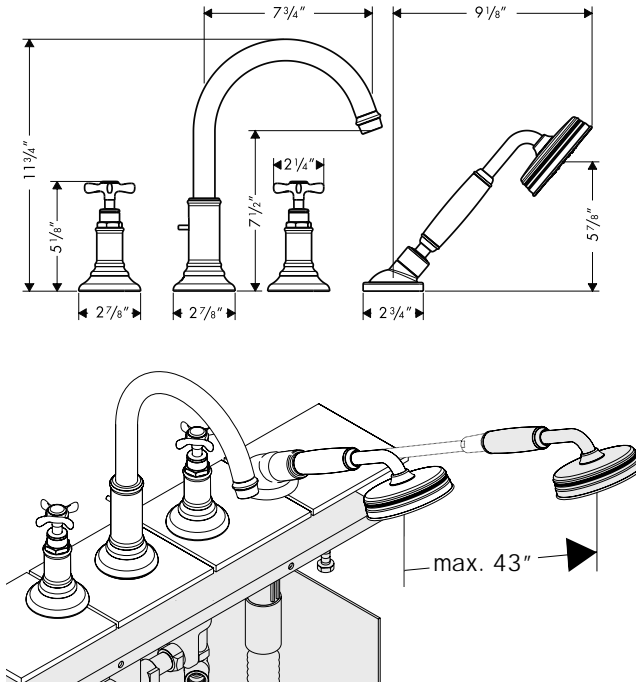
Installation Instructions / Warranty



Axor Montreux
16544XX1

hangrohe

Axor Montreux 4-Hole Roman Tub Trim 16544XX1



Installation Considerations

- This trim kit must be used with rough 13444181. The handshower must be used.
- Backflow protection is provided by a check valve in the handshower connection hose. Additionally, the diverter will automatically spring back to the "spout" position if a backflow condition exists.

Roman tub rough 13444181 is listed by UL.

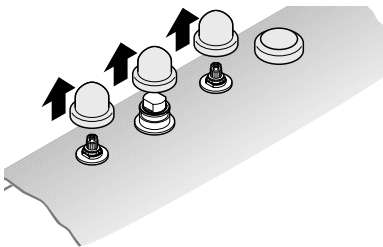
Product Specifications

Recommended operating pressure	45 - 80 psi
Recommended hot water temperature	120° - 140° F*
Flow rate - handshower	2.5 gpm

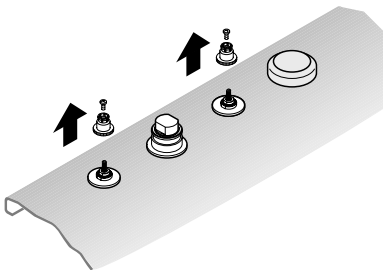
* Some governing agencies require that the water heater be set to 120° F or less. Please know and follow all applicable local codes when setting the temperature on the water heater.

Installation

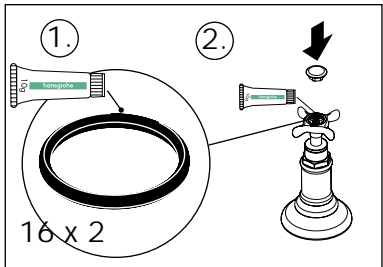
Remove the plaster shields from the valves and spout tee.



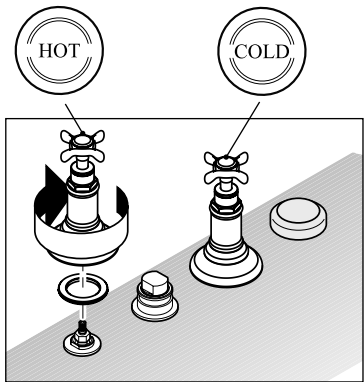
Remove the snap connectors and screws. Discard the snap connectors.



Lubricate the index cap o-rings with a small amount of the enclosed grease (1). Install the hot and cold index caps (2).

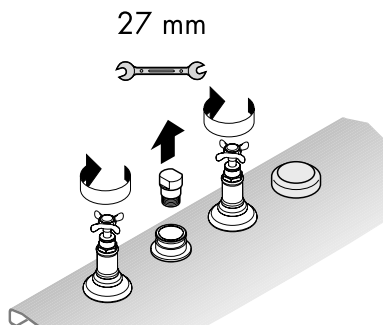


Push the handle over the valve stem. Thread the handle flange over the valve.

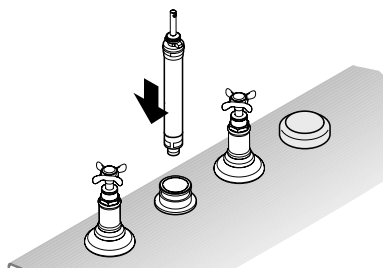


Turn the handles clockwise to make sure that the valves are off.

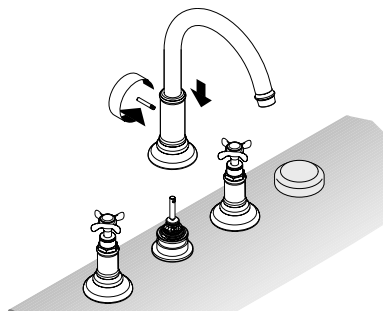
Remove the spout tee plug with a 27 mm wrench.



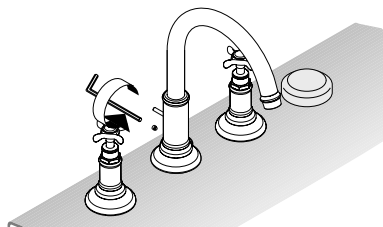
Push the diverter firmly into the spout tee.



Push the spout over the diverter. Install the diverter knob.



Tighten the spout set screw with the enclosed 3 mm Allen wrench.

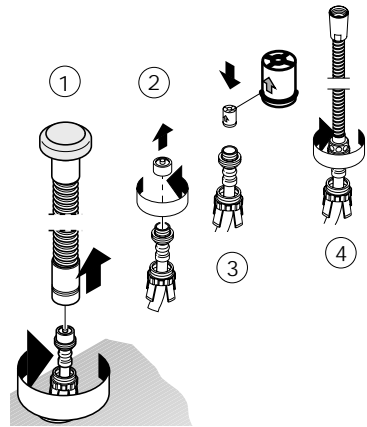


Pull the Secuflex hose up and away from the handshower holder base. Disconnect the Secuflex hose from the high pressure hose by unscrewing the white plastic hose nut. (1) Take care that the high pressure hose does not fall under the tub.

Remove the brass plug from the high pressure hose (2).

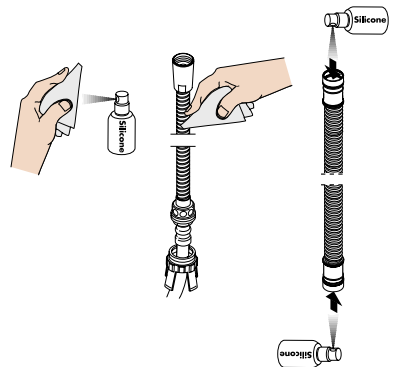
Install the check valve in the high pressure hose (3). The arrow on the check valve must point in the direction of the water flow.

Install the handshower hose on the high pressure hose (4).



Spray a soft cloth with silicone lubricant (not included). Wipe the handshower hose with the cloth.

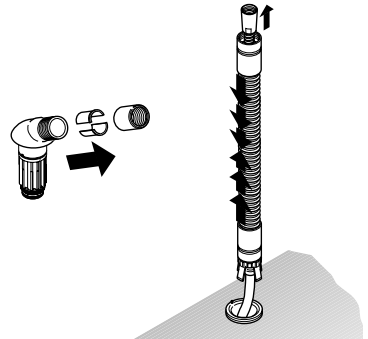
Spray the ends of the Secuflex hose as well.



Install the Secuflex hose over the handshower hose. Tighten the white plastic hose nut.

Remove the nut and hose insert from the handshower holder.

Compress the Secuflex hose so that the end of the handshower hose is accessible.



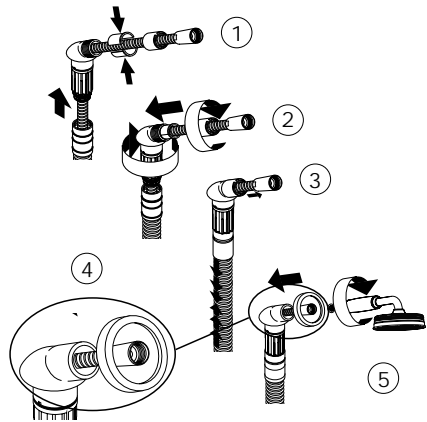
Push the handshower hose through the handshower holder (1). Snap the two halves of the hose insert around the hose.

Reinstall the nut on the handshower holder (2).

Pull outward on the end of the handshower hose (3).

Place the handshower holder escutcheon over the handshower holder (4).

Place the screen washer in the end of the handshower hose. Install the handshower (5).

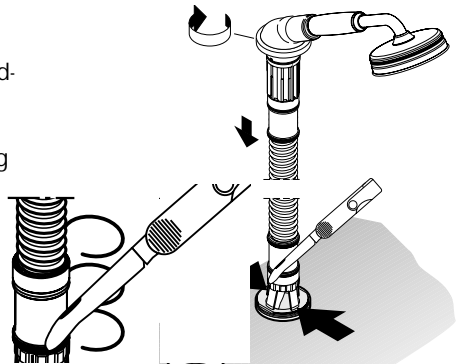


Cut the o-rings on the end of the Secuflex hose.

Feed the Secuflex hose assembly back through the handshower holder base.

Sit the handshower holder on the base. The positioning pin on the base should go into the hole on the handshower holder.

Thread the handshower holder escutcheon over the base to secure the handshower holder.

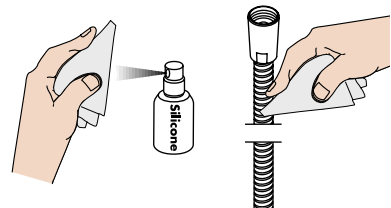


User Instructions

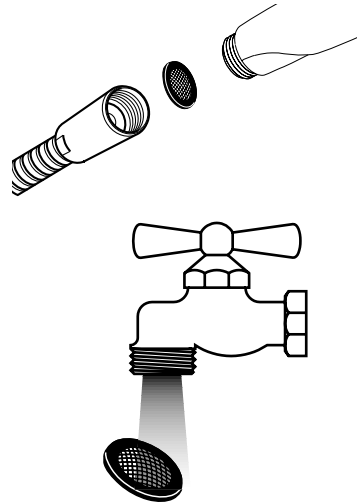
Turn the left handle to obtain hot water, the right handle to obtain cold water.

When the water is turned on, it will come out of the tub spout. Pull upward on the diverter knob to divert the water to the handshower.

If it becomes difficult to pull the handshower out, lubricate the handshower hose with silicone lubricant.

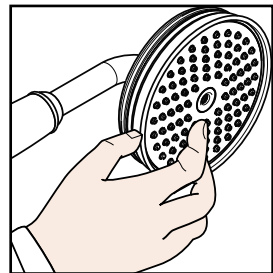


If the flow of water from the handshower decreases over time, remove and clean the screen washer.



Scale Removal

The Axor Montreux handshower incorporates the Rubit™ cleaning system. If scale deposits are noticed in the spray channels, turn the water on lightly and rub the spray channels with a finger or a sponge.



If scale deposits are noticed on the spray face, pour about 3/4" of a commercial scale remover, such as Lime-Away™ or CLR™, into a shallow dish. Dilute the scale remover according to the label instructions.

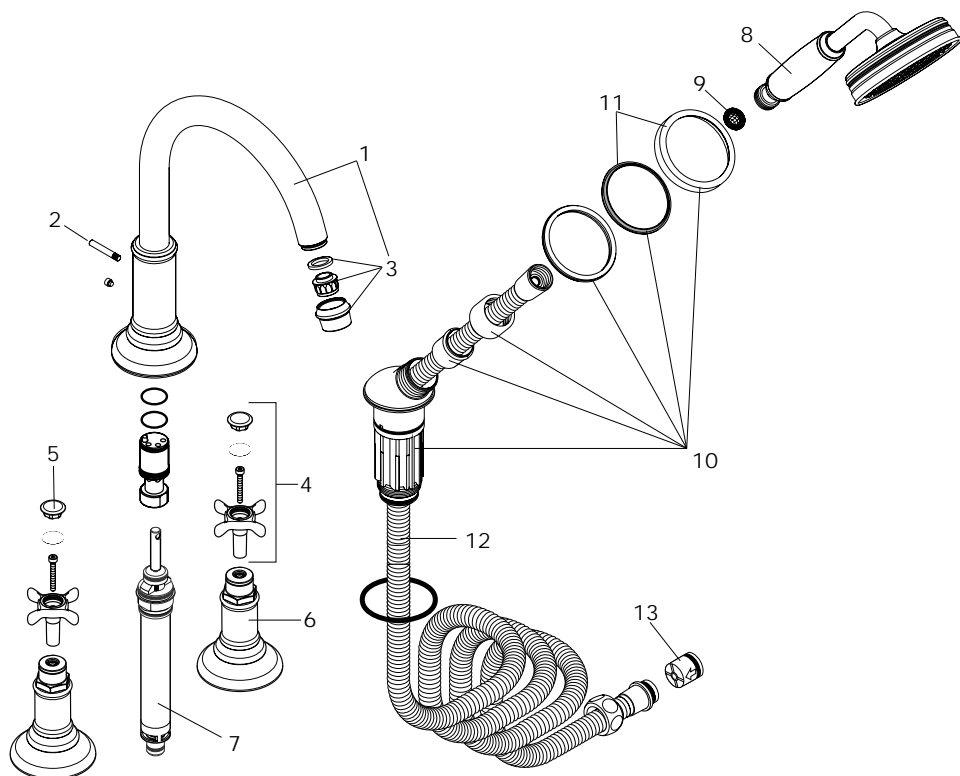


Soak only the spray face in the solution for the amount of time specified on the label.

Rinse the handshower with clear water.

Reinstall the handshower. Turn on the water and allow the handshower to flush for at least one minute.





Replacement Parts

1	spout	98606XXX
2	diverter knob	98607XXX
3	aerator	98575XXX
4	handle for cold / hot water	16291XXX
5	screw cover for cold / hot water	97987000
6	flange	98605XXX
7	diverter	97146000
8	handshower	16320XXX
9	screen washer	94246000
10	handshower holder	96433XXX
11	handshower holder escutcheon	96237XXX
12	handshower hose	94148000
13	check valve DW15	94074000

XXX = **Colors**

001 chrome plated
821 brushed nickel
831 polished nickel

Cleaning Recommendation for Hansgrohe Products

Modern faucetry and shower products utilize a combination of materials to comply with the needs of the market with regard to design and functionality.

To avoid damage, it is necessary to use some caution when cleaning. Damage caused by improper treatment is not covered under the Hansgrohe warranty.

Cleaning Materials for Faucets and Showers

- To remove lime scale, use only products made specifically for that purpose. Always follow the manufacturer's instructions when using.
- Do not use cleaners that contain hydrochloric, formic, acetic, or phosphoric acids, as these will cause considerable damage to finishes and to plastic components.
- Never mix cleaning materials.
- Never use cleaners containing abrasives. Do not use abrasive cleaning cloths, pads, or sponges.

Cleaning Procedures

- Clean your faucets and shower products as and when required. Regular cleaning will prevent scale buildup and water spotting.
- Follow the label instructions. Do not allow any cleaner to remain on the product for longer than necessary.
- When using spray cleaners, spray first onto a sponge or cloth – do not spray directly onto the product.
- After cleaning, rinse thoroughly with clear water to remove any cleaner residue.

Important

- Soap and shampoo residue can also cause damage to the product. Rinse well with clean water after use.
- If the surface is already damaged, harsh cleaning materials will cause further damage.

Limited Lifetime Consumer Warranty

This product has been manufactured and tested to the highest quality standards by Hansgrohe, Inc. ("Hansgrohe"). This warranty is limited to Hansgrohe products which are purchased by a consumer in the United States after March 1, 1996, and installed in either the United States or Canada.

WHO IS COVERED BY THE WARRANTY

This warranty extends to the original consumer purchaser only.

WHAT IS COVERED BY THE WARRANTY

This warranty covers only your Hansgrohe manufactured product. Hansgrohe warrants this product against defects in material or workmanship as follows: Hansgrohe will repair at no charge for parts only or, at its option, replace any product or part of the product which proves defective because of improper workmanship and/or material, under normal installation, use, service and maintenance. If Hansgrohe is unable to provide a replacement and repair is not practical or cannot be timely made, Hansgrohe may elect to refund the purchase price in exchange for the return of the product.

LENGTH OF WARRANTY

Replacement or repaired parts of products will be covered for the term of this warranty as stated in the following two sentences. If you are a consumer who purchased the product for use primarily for personal, family, or household purposes, this warranty extends for as long as you own the product and the home in which the product is installed. If you purchased the product for use primarily for any other purpose, including, without limitation, a commercial purpose, this warranty extends only (i) for 1 year, with respect to Interaktiv and Retroaktiv products, and (ii) for 5 years, with respect to AXOR, ShowerPower and Pharo products.

THIS WARRANTY DOES NOT COVER, AND HANSGROHE WILL NOT PAY FOR:

- A. Conditions, malfunctions or damage not resulting from defects in material or workmanship.
- B. Conditions, malfunctions or damage resulting from (1) improper installation, improper maintenance, misuse, abuse, negligence, accident or alteration, or (2) the use of abrasive or caustic cleaning agents or "no rinse" cleaning products, or the use of the product in any manner contrary to the product instructions.
- C. Labor or other expenses for the disconnection or return of the product for warranty service, or for installation or reinstallation of the product.
- D. Accessories or related products not manufactured by Hansgrohe.

TO OBTAIN WARRANTY SERVICE

Contact your Hansgrohe retailer, or write to Technical Service at:

Hansgrohe Inc.
1492 Bluegrass Lakes Parkway
Alpharetta GA 30004

Or, call Hansgrohe toll-free at (800) 334-0455.

In requesting warranty service, you will need to provide

- 1. The sales receipt or other evidence of the date and place of purchase.
- 2. A description of the problem.
- 3. Delivery of the product or the defective part, postage prepaid and carefully packed and insured, to Hansgrohe Inc. 1492 Bluegrass Lakes Parkway, Alpharetta, Georgia 30004, Attention: Technical Service, if required by Hansgrohe.

When warranty service is completed, any repaired or replacement product or part will be returned to you postage prepaid.

EXCLUSIONS AND LIMITATIONS

REPAIR OR REPLACEMENT (OR, IN LIMITED CIRCUMSTANCES, REFUND OF THE PURCHASE PRICE) AS PROVIDED UNDER THIS WARRANTY IS THE EXCLUSIVE REMEDY OF THE PURCHASER. HANSGROHE NEITHER ASSUMES NOR AUTHORIZES ANY PERSON TO CREATE FOR IT ANY OBLIGATION OR LIABILITY IN CONNECTION WITH THIS PRODUCT.

HANSGROHE SHALL NOT BE LIABLE TO PURCHASER OR ANY PERSON FOR ANY INCIDENTAL, SPECIAL, OR CONSEQUENTIAL DAMAGES, ARISING OUT OF BREACH OF THIS WARRANTY OR ANY IMPLIED WARRANTY (INCLUDING MERCHANTABILITY).

Some States do not allow the exclusion or limitation of incidental or consequential damages, so the above limitation or exclusion may not apply to you.

This warranty gives you specific legal rights, and you may have other rights which vary from State to State.

You may be required by law to give us a reasonable opportunity to correct or cure any failure to comply before you can bring any action in court against us under the Magnuson-Moss Warranty Act.

PRODUCT INSTRUCTIONS AND QUESTIONS

Upon purchase or prior to installation, please carefully inspect your Hansgrohe product for any damage or visible defect. Prior to installing, always carefully study the enclosed instructions on the proper installation and the care and maintenance of the product. If you have questions at any time about the use, installation, or performance of your Hansgrohe product, or this warranty, please call or write to us at the toll-free number and address printed above.

hansgrohe

Hansgrohe, Inc. • 1490 Bluegrass Lakes Parkway • Alpharetta, GA 30004
Tel. 770 360-9880 • Fax 770 360 9887

www.hansgrohe-USA.com